

CONSULTATION DOCUMENT_as amended by ERandEMWG1

DRAFT - STANDARDS, SPECIFICATIONS AND PROCEDURES (SSP) FOR ELECTRONIC REPORTING IN THE WESTERN AND CENTRAL PACIFIC FISHERIES COMMISSION

Objectives for the SSP

1. These SSP are a set of data standards that, at a minimum:
 - a. provide a basis for those CCMs who are considering the implementation of electronic reporting technologies in their fisheries;
 - b. provides a mechanism, for those CCMs who have commenced implementation of electronic reporting technologies in their fisheries, to have the option of using these technologies to facilitate their implementation of certain reporting requirements to the Commission;
 - c. provides a basis for the Secretariats preparations to be ready to receive a standardized set of electronically reported fisheries data from CCMs and as appropriate from vessels;
 - d. takes into account current and developing fisheries monitoring and information management systems in use in WCPFC fisheries; and
 - e. where practicable, is mindful of existing and proposed data standards and formats in other regional bodies and RFMOs.

Scope of application

2. These SSPs apply initially to the following reporting requirements under these conservation and management measures or decisions of the WCPFC:
 - a. Paragraph 2 of CMM 2010-02 *Conservation and Management Measure for the Eastern High Seas Pocket Special Management Area*;
 - b. Attachment C paragraph 3 of CMM 2014-01 *Conservation and Management Measure for Bigeye, Yellowfin and Skipjack tuna in the Western and Central Pacific Ocean*;
 - c. WCPFC9 decision on the *Standard format for manual position reporting in the event of ALC/MTU Malfunction or Failure* (WCPFC9 Summary Report Attachment H); and
 - d. Paragraph 3 and Annex 1 of *Scientific Data to be Provided to the Commission*;
 - e. *WCPFC ROP Minimum Standard Data Fields*, as amended by WCPFC11 decisions.

3. Until decided otherwise by the Commission, other forms of electronically reported data, and as appropriate hard copy formats, will continue to be acceptable forms of reporting from CCMs, and as appropriate from their vessels, to meet agreed reporting requirements under the above listed conservation and management measures or decisions of the WCPFC.
4. These SSP, including any agreed amendments, will take effect [six] months after adoption by the WCPFC.

Responsibilities of CCMs

5. It shall be the responsibility of CCMs who choose to use electronic reporting technologies to meet certain WCPFC reporting requirements to:
 - a. submit electronically reported data to the WCPFC Secretariat¹ that includes the minimum required fields and also meets the structure and format specifications of Attachment 1A, 1B, 1C, 3A and 3B as appropriate; and
 - b. submit electronically reported data to the WCPFC Secretariat that meet the electronic format specifications of Attachment 2 and 4, as appropriate.²
6. It shall be the responsibility of CCMs to inform the WCPFC Secretariat of any confidentiality requirements that may need to be taken into account upon receipt of such data.

Responsibilities of the WCPFC Secretariat

7. It shall be the responsibility of the WCPFC Secretariat to:
 - a. develop and maintain the technical and administrative systems that ensure data confidentiality³ needed to receive electronically reported data from CCMs, which may be submitted and that meet the electronic format specifications of Attachment 2 and 4;
 - b. acknowledge, upon receipt of electronically reported data from a CCM or as appropriate from a vessel, receipt of the data and indicate to the CCM and as appropriate to the vessel, in a timely manner whether the data meet the minimum

¹ It is recognized that some CCMs, who are SPC members, submit data described in Attachment 3A and 3B to WCPFC via SPC-OFP

² The Commission may consider additional modes of transmission, such as modes involving direct links between the Commission's and CCMs' databases.

³ In accordance with applicable data confidentiality rules, including Rules and Procedures for the Protection, Access to, and Dissemination of Data Compiled by the Commission (2007 and 2009)

data requirements and, if applicable, whether they meet the electronic formatting specifications of Attachment 2 and 4;

- c. monitor and report annually to the TCC, and as appropriate the SC, on the performance of these electronic reporting standards and their application and, as necessary, make recommendations for improvements or modifications;
- d. recommend continual improvements to these SSPs, including, where appropriate, standards and codes that are consistent with those used in other international fora, such as the FAO and UN/CEFACT; and
- e. ensure the electronic data standards are publically available and is suitably version controlled.

Attachment 1A. Electronic data standard to be used for paragraph 2 of CMM 2010-02 Conservation and Management Measure for the Eastern High Seas Pocket Special Management Area (or its replacement) (EHSPSMARPT)

EHSP-SMA reporting				
<p>2. Flag States shall require their vessels to submit reports, directly, or through such organisations designated by the flag state to the Commission at least 6 hours prior to entry and no later than 6 hours prior to exiting the E-HSP. Such reports shall also contain estimated catch (kilograms) on board. This information shall immediately be transmitted by the Commission Secretariat to the adjacent coastal states/territories, and shall be considered non-public domain data. The report shall be in the following format: VID/Entry/Exit: Date/Time¹; Lat/Long¹; YFT/BET/ALB/SKJ/SWO/SHK/OTH/TOT(kgs) /TRANSHIPMENT (Y/N)²</p> <p>¹ Of anticipated point of entry or exit. ² WCPFC11 agreed to amend CMM 2010-02 paragraph 2 to add vessel name to reporting requirements</p>				
Field name	Field format	Field description/instructions	Example	Ref. in CMMs
VID	Number (integer)	This number is generated automatically by the WCPFC Record of Fishing Vessels (RFV), and is now a field that in accordance with CMM 2014-03 is displayed, for all vessels on the WCPFC RFV.	10503	2010-02: 02 2014-03
Entry/Exit	Text	Enter “ENTRY” for reports prior to entry to Eastern High Seas Pocket Special Management Area. Enter “EXIT” for reports made prior to exiting the Eastern High Seas Pocket Special Management Area	ENTRY	2010-02: 02
Date/Time	Number (integer)	Of anticipated point of entry or exit, in UTC and 24 hour format (ISO 8601) [YYYY]-[MM]-[DD]T[HH]:[MM]Z	2014-01-24T23:00Z	2010-02: 02
Latitude	Number (integer)	Positions to degrees and minutes to 3 decimal places (ISO 6709) +/- DDMM.MMM	- 14.166 <i>(for 14-10-00 S)</i>	2010-02: 02
Longitude	Number (integer)	Positions to degrees and minutes to 3 decimal places (ISO 6709) +/- DDDMM.MMM	- 157.45 <i>(for 157-27-00 W)</i>	2010-02: 02
Yellowfin	Number (integer)	Provide total weight (kg) of YELLOWFIN onboard. Enter “0” if NONE	23	2010-02: 02
Bigeye	Number (integer)	Provide total weight (kg) of BIGEYE onboard. Enter “0” if NONE	16	2010-02: 02
Albacore	Number (integer)	Provide total weight (kg) of ALBACORE onboard. Enter “0” if NONE	0	2010-02: 02

EHSP-SMA reporting				
<p>2. Flag States shall require their vessels to submit reports, directly, or through such organisations designated by the flag state to the Commission at least 6 hours prior to entry and no later than 6 hours prior to exiting the E-HSP. Such reports shall also contain estimated catch (kilograms) on board. This information shall immediately be transmitted by the Commission Secretariat to the adjacent coastal states/territories, and shall be considered non-public domain data. The report shall be in the following format: <i>VID/Entry/Exit: Date/Time¹; Lat/Long¹; YFT/BET/ALB/SKJ/SWO/SHK/OTH/TOT(kgs) /TRANSHIPMENT (Y/N)²</i></p> <p>¹ Of anticipated point of entry or exit. ² WCPFC11 agreed to amend CMM 2010-02 paragraph 2 to add vessel name to reporting requirements</p>				
Field name	Field format	Field description/instructions	Example	Ref. in CMMs
Skipjack	Number (integer)	Provide total weight (kg) of SKIPJACK onboard. Enter “0” if NONE	0	2010-02: 02
Swordfish	Number (integer)	Provide total weight (kg) of SWORDFISH onboard. Enter “0” if NONE	0	2010-02: 02
Shark	Number (integer)	Provide total weight (kg) of SHARKS onboard. Enter “0” if NONE	0	2010-02: 02
Other	Number (integer)	Provide total weight (kg) of OTHER CATCHES onboard. Enter “0” if NONE	5	2010-02: 02
Total	Number (integer)	Provide total weight (kg) of all species on board. Enter “0” if NONE	54	2010-02: 02
Transshipment (Y/N)	Text	Enter “Y” if intend to transship in Eastern High Seas Pocket Special Management Enter “N” if do not intend to transship in Eastern High Seas Pocket Special Management	N	2010-02: 02
WCPFC Identification Number (WIN)	Text	Vessel identifier assigned by flag State in accordance with CMM 2004-03, in UPPER CASE	ABC1234	2013-10: 6(a)
Vessel Name	Text	Name of the fishing vessel as indicated on flag State registration, in UPPER CASE	SEA MAPLE II	2013-10: 6(a)

Attachment 1B. Electronic data standard to be used for Attachment C paragraph 3 of CMM 2014-01 Conservation and Management Measure for Bigeye, Yellowfin and Skipjack tuna in the Western and Central Pacific Ocean (or its replacement) (HSP1MARPT)

PHILIPPINES HSP1-SMA reporting				
3. Philippines shall require its concerned vessels to submit reports to the Commission at least 24 hours prior to entry and no more than 6 hours prior to exiting the HSP-1 SMA. This information may, in turn, be transmitted to the adjacent coastal States/Territories. The report shall be in the following format: VID/Entry or Exit: Date/Time; Lat/Long				
Field name	Field format	Field description/instructions	Example	Ref. in CMMs
VID	Number (integer)	This number is generated automatically by the WCPFC Record of Fishing Vessels (RFV), and is now a field that in accordance with CMM 2014-03 is displayed, for all vessels on the WCPFC RFV.	10503	2014-03
WCPFC Identification Number (WIN)	Text	Vessel identifier assigned by flag State in accordance with CMM 2004-03, in UPPER CASE	ABC1234	2013-10: 6(a)
Vessel Name	Text	Name of the fishing vessel as indicated on flag State registration, in UPPER CASE	SEA MAPLE II	2013-10: 6(a)
Entry/Exit	Text	Enter “ENTRY” for reports prior to entry to High Seas Pocket 1 - Special Management Area. Enter “EXIT” for reports made prior to exiting the High Seas Pocket 1 - Special Management Area.	EXIT	2014-01: Att C 03
Date/Time	Number (integer)	Of anticipated point of entry or exit, in UTC and 24 hour format (ISO 8601) [YYYY]-[MM]-[DD]T[HH]:[MM]Z	2014-01-24T23:00Z	2014-01: Att C 03
Latitude	Number (integer)	Positions to degrees and minutes to 3 decimal places (ISO 6709) +/- DDMM.MMM	- 14.166 <i>(for 14-10-00 S)</i>	2014-01: Att C 03
Longitude	Number (integer)	Positions to degrees and minutes to 3 decimal places (ISO 6709) +/- DDDMM.MMM	- 157.45 <i>(for 157-27-00 W)</i>	2014-01: Att C 03

Attachment 1C. Electronic data standard to be used for WCPFC9 decision on the Standard format for manual position reporting in the event of ALC/MTU Malfunction or Failure (WCPFC9 Summary Report Attachment H) (or its replacement) (VMSMNL RPT)

MANUAL POSITION REPORTING IN THE EVENT OF ALC/MTU MALFUNCTION OR FAILURE				
<i>WCPFC9 agreed standard format for manual position reporting in the event of ALC/MTU Malfunction or Failure:</i>				
<i>1 WIN</i>		<i>5 Latitude – DD-MM-SS (N/S)</i>		
<i>2 Vessel Name</i>		<i>6 Longitude – DDD-MM-SS (E/W)</i>		
<i>3 Date: dd/mm/yy</i>		<i>7 Activity (Fishing/Searching/Transit/Transshipping)</i>		
<i>4 Time: 24 hour format HH:MM (UTC)</i>				
Field name	Field format	Field description/instructions	Example	Ref. in CMMs
VID	Number (integer)	This number is generated automatically by the WCPFC Record of Fishing Vessels (RFV), and is now a field that in accordance with CMM 2014-03 is displayed, for all vessels on the WCPFC RFV.	10503	2014-03**
WCPFC Identification Number (WIN)	Text	Vessel identifier assigned by flag State in accordance with CMM 2004-03, in UPPER CASE	ABC1234	2013-10: 6(a)
Vessel Name	Text	Name of the fishing vessel as indicated on flag State registration, in UPPER CASE	SEA MAPLE II	2013-10: 6(a)
Date/Time	Number (integer)	Of anticipated point of entry or exit, in UTC and 24 hour format (ISO 8601) [YYYY]-[MM]-[DD]T[HH]:[MM]Z	2014-01-24T23:00Z	2014-01: Att C 03
Latitude	Number (integer)	Positions to degrees and minutes to 3 decimal places (ISO 6709) +/- DDMM.MMM	- 14.166 <i>(for 14-10-00 S)</i>	2014-01: Att C 03
Longitude	Number (integer)	Positions to degrees and minutes to 3 decimal places (ISO 6709) +/- DDDMM.MMM	- 157.45 <i>(for 157-27-00 W)</i>	2014-01: Att C 03
Activity	Text	Enter “FISHING” Enter “SEARCHING” Enter “TRANSIT” Enter “TRANSHIPPING”	TRANSIT	WCPFC9 decision

** - VID is an additional data field and is necessary to support operational “upload” into WCPFC databases

Attachment 2. Electronic Formatting Specifications for EHSPSMARPT, HSP1SMARPT and VMSMNLRPT

These specifications describe the electronic files that CCMs must provide if they choose to use electronic reporting technologies to meet the following WCPFC reporting requirements:

- i. Paragraph 2 of CMM 2010-02 *Conservation and Management Measure for the Eastern High Seas Pocket Special Management Area* (CMM 2010-02: 02)
- ii. Attachment C paragraph 3 of CMM 2014-01 *Conservation and Management Measure for Bigeye, Yellowfin and Skipjack tuna in the Western and Central Pacific Ocean* (CMM 2014-01: Att C 03); and
- iii. WCPFC9 decision on the *Standard format for manual position reporting in the event of ALC/MTU Malfunction or Failure* (WCPFC9 Summary Report Attachment H) to meet (CMM 2014-02 9a VMS SSPs 5.4 - 5.5).

A) File type

The information must be provided in one of the following formats:

Microsoft Excel file ; Comma separated values (CSV) file ; Text file

B) File name

The name of the file must be: XX_ VID_XXXXXXXX_ DDMMYYYY.sssss

where:

- XX – two letter ISO country code (CMM 2014-03 Att 7) of the CCM providing the file
- VID – five digit integer assigned number for a vessels record on the WCPFC Record of Fishing Vessels (RFV) (CMM 2014-03)
- XXXXXXXXXXX – a ten digit code to represent the type of CMM reporting requirement
 - EHSPSMARPT – CMM 2010-02: 02
 - HSP1SMARPT – CMM 2014-01: Att C 03
 - VMSMNLRPT – VMS manual report for ALC failure or malfunction (CMM 2014-02 9a VMS SSPs 5.4 - 5.5)
- DDMMYYYY – the date of the provision of the file
- sssss – the standard file suffix (xls or xlsx if Excel file; csv if CSV file; txt if Text file)

For example:

CK_5936_EHSPSMARPT_11082013.xlsx (Excel file Eastern High Sea Pocket Special Management Area Report provided by Cook Islands for vessel with VID 5936, on 11 August 2013)

C) File content and structure

Each record in the electronic file represents a single report. Each record must have the structure specified in Attachment 1A, 1B or 1C, including the same sequence of fields.

Sample electronic reporting files with the proper formats are available from the Secretariat.

Attachment 4

CONSULTATION DOCUMENT: DRAFT – SSPs FOR ELECTRONIC REPORTING IN THE WCPFC_{as} amended by
ERandEMWG1

Attachment 3A. Electronic data standard to be used for WCPFC ROP Minimum Standard Data Fields, as amended by WCPFC11 decisions.

Western and Central Pacific Fisheries Commission (WCPFC)

E-REPORTING STANDARD DATA FIELDS

OPERATIONAL OBSERVER DATA

Draft – Version 1.0

10th June 2015

Contents

INTRODUCTION	3
1.PURSE SEINE OBSERVER E-REPORTING STANDARDS	4
1.1 DATA MODEL DIAGRAM.....	4
1.2 TRIP-LEVEL DATA.....	5
1.3 DAILY SUMMARY DATA.....	8
1.4 ACTIVITY LOG DATA	9
1.5 SET-LEVEL DATA	10
1.6 SET CATCH DATA.....	12
1.7 SPECIES OF SPECIAL INTEREST DATA.....	13
1.8 SPECIES OF SPECIAL INTEREST DETAILS DATA.....	16
1.9 LENGTH SAMPLE DATA.....	17
1.10 INDIVIDUAL LENGTH DATA.....	18
1.11 TRIP MONITORING QUESTIONS	19
1.12 TRIP MONITORING COMMENTS.....	19
1.13 VESSEL/AIRCRAFT SIGHTINGS DATA.....	20
1.14 CREW DATA.....	21
1.15 MARINE DEVICES DATA.....	22
1.16 WELL TRANSFER DATA	23
1.17 PURSE SEINE GEAR DATA	24
1.18 FAD MATERIAL DATA.....	25
1.19 FAD MATERIAL DETAIL	26
1.20 OBSERVER POLLUTION REPORT	27
1.21 OBSERVER POLLUTION DETAILS.....	28
1.22 OBSERVER JOURNAL	28
1.23 PURSE SEINE TRIP REPORT	29
2.LONGLINE OBSERVER E-REPORTING STANDARDS	31
2.1 DATA MODEL DIAGRAM.....	31
2.2 TRIP-LEVEL DATA.....	32
2.3 SET-LEVEL DATA	33
2.4 SET-HAUL LOG DATA	35
2.5 SET CATCH DATA	36
2.6 SPECIES OF SPECIAL INTEREST DATA.....	37
2.7 SPECIES OF SPECIAL INTEREST DETAILS DATA.....	37
2.8 TRIP MONITORING QUESTIONS	37
2.9 TRIP MONITORING COMMENTS.....	37
2.10 VESSEL/AIRCRAFT SIGHTINGS DATA.....	37
2.11 MARINE DEVICES DATA.....	37
2.12 CREW DATA.....	38
2.13 LONGLINE GEAR DATA	39
2.14 POLLUTION REPORT	41
2.15 OBSERVER JOURNAL	41
2.16 LONGLINE TRIP REPORT	42

APPENDICES.....	44
APPENDIX A1 – DATE/TIME FORMAT	44
APPENDIX A2 – POSITION/COORDINATE FORMAT	44
APPENDIX A3 – PORT LOCATION CODES	44
APPENDIX A4 – VESSEL IDENTIFICATION	45
APPENDIX A5 – PURSE SEINE OBSERVER ACTIVITY CODES	46
APPENDIX A6 – PURSE SEINE TUNA SCHOOL ASSOCIATION CODES	46
APPENDIX A7 – PURSE SEINE TUNA SCHOOL DETECTION CODES.....	46
APPENDIX A8 – SPECIES CODES	47
APPENDIX A9 – OBSERVER FATE CODES	47
APPENDIX A10 – OBSERVER CONDITION CODES	48
APPENDIX A11 – LENGTH CODES.....	49
APPENDIX A12 – SEX CODES	49
APPENDIX A13 – Vessel activity (SSI interaction) codes	50
APPENDIX A14 – SIZE and SPECIES COMPOSITION SAMPLE PROTOCOL	50
APPENDIX A15 – MEASURING INSTRUMENTS Codes	50
APPENDIX A16 – TRIP MONITORING QUESTION Codes.....	51
APPENDIX A17 – VESSEL / AIRCRAFT SIGHTINGS Codes	52
APPENDIX A18 – ACTION Codes	52
APPENDIX A19 – Purse seine CREW JOB Codes	53
APPENDIX A20 – MARINE DEVICES Codes	54
APPENDIX A21 – DEVICE USAGE codes.....	54
APPENDIX A22 – WEIGHT MEASUREMENT codes	55
APPENDIX A23 – GONAD STAGE codes.....	55
APPENDIX A24 – FAD ORIGIN codes	56
APPENDIX A25 – FAD DETECTION codes.....	56
APPENDIX A26 – FAD MATERIAL codes	56
APPENDIX A27 – FAD TYPE codes	57
APPENDIX A28 – POLLUTION GEAR codes	57
APPENDIX A29 – POLLUTION MATERIALS codes	57
APPENDIX A30 – POLLUTION SOURCE codes.....	57
APPENDIX A31 – POLLUTION TYPE codes	57

INTRODUCTION

These tables set out the proposed standards for the provision of operational OBSERVER data fields collected in the WCPFC tropical purse seine and the longline fisheries through E-Reporting. These tables provide the minimum requirements for data entities, data formats and data validation to be established for data submitted to the national and regional fisheries authorities from E-Reporting systems. The data fields contained herein are based on information collected under the current regional standard data collection forms. This document acknowledges that national fisheries authorities require certain data fields that are not mandatory WCPFC Regional Observer Programme (ROP) data fields (for example, for anticipated Catch Documentation System – CDS – requirements), so a column in these tables identifies whether the data field is a mandatory WCPFC data field¹ or not.

These E-Reporting data field standards are consistent with, and should be considered in conjunction with more detailed instructions² on how to collect observer data provided by SPC.

These tables are intended for, *inter alia*, E-Reporting service providers who have been contracted to provide electronic systems to record OBSERVER data collected on-board purse seine vessels.

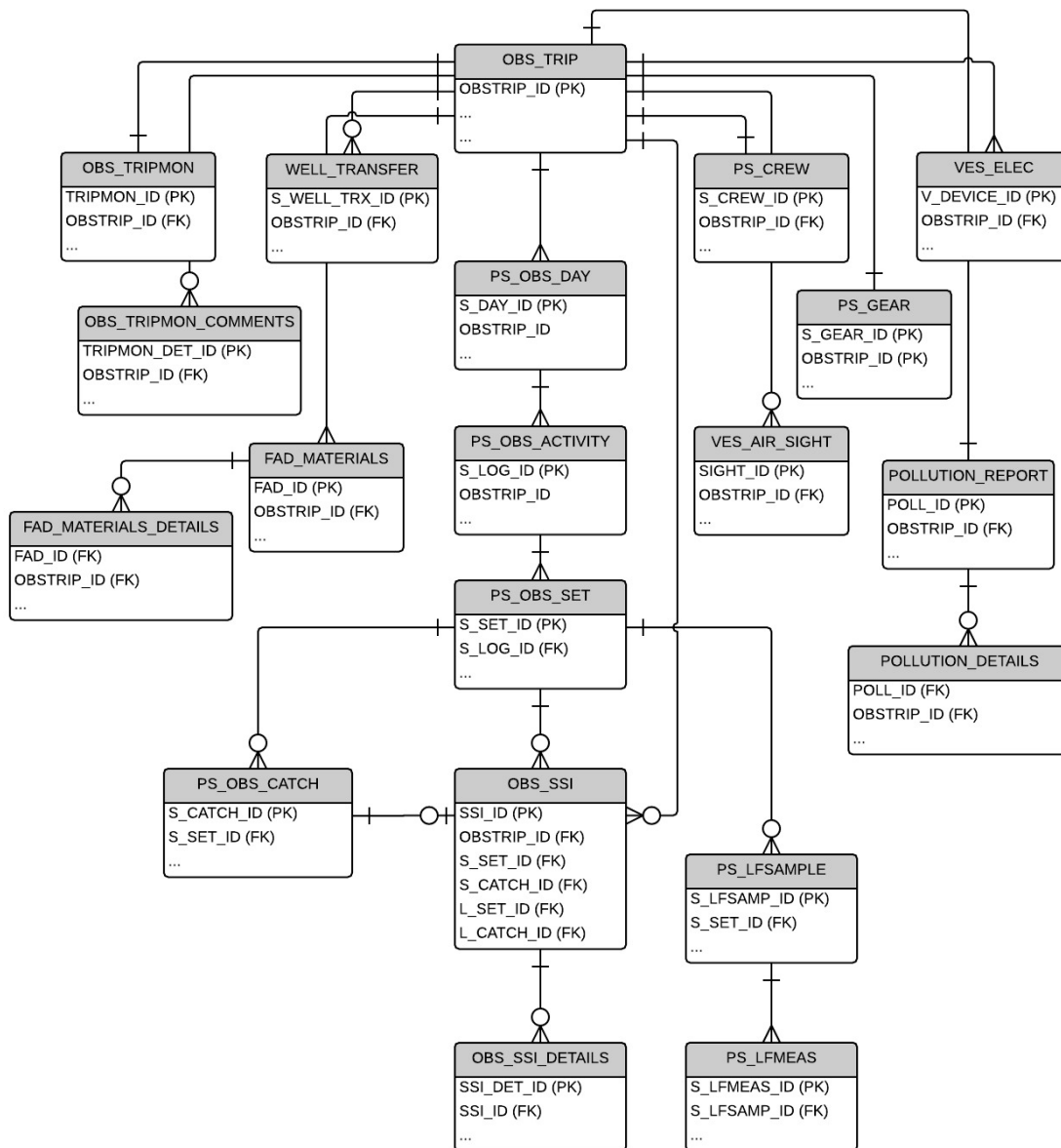
¹ The minimum standard WCPFC Regional Observer programme (ROP) data fields for purse seine data are found in the “WCPFC ROP Minimum Standard Data Fields & Instructions” <http://www.wcpfc.int/doc/table-rop-data-fields-including-instructions>

² In addition to the minimum WCPFC ROP data fields, instructions for observer data collection in the WCPFC Area are available with the regional standard observer data collection forms at <http://www.spc.int/oceanfish/en/data-collection/241-data-collection-forms>, general information/instruction for observers at <http://www.spc.int/OceanFish/en/ofpsection/fisheries-monitoring/observers> and <http://www.spc.int/OceanFish/en/certification-and-training-standards>.

1. PURSE SEINE OBSERVER E-REPORTING STANDARDS

1.1 DATA MODEL DIAGRAM

The following basic data model diagram outlines the structure of the entities and their relationships for purse seine operational OBSERVER data collected by E-Reporting systems and submitted to national and regional fisheries authorities. The tables that follow provide more information on the mechanisms of the links (relationships) between the entities.



1.2 TRIP-LEVEL DATA

OBS_TRIP					
"The start of a trip is defined to occur when a vessel (a) leaves port after unloading part or all of the catch to transit to a fishing area or (b) recommences fishing operations or transits to a fishing area after transshipping part or all of the catch at sea (when this occurs in accordance with the terms and conditions of article 4 of Annex III of the Convention, subject to specific exemptions as per article 29 of the Convention)."					
FIELD	Data Collection Instructions	Field format notes	Validation rules	XML TAG	WCPFC FIELD
TRIP IDENTIFIER	Internally generated. Can be NATURAL KEY or unique integer. NATURAL KEY would be VESSEL + DEPARTURE DATE			<OBSTRIP_ID>	Y
OBSPRG_CODE	<p>OBSERVER SERVICE PROVIDERS identification- National or sub-regional observer programmes</p> <p>For national programmes, this is the COUNTRY_CODE + 'OB' for example, 'PJOB' - for the PNG national observer programme.</p> <p>For Sub-regional programmes, the following codes are used.</p> <p>'TTOB' - US Multilateral Treaty Observer programme</p> <p>'FAOB' - FSM Arrangement Observer Programme</p>	Char (4)	<p>Observer programme code must be must valid country.</p> <p>Refer to valid ISO two-letter Country Codes - ISO 3166 For example, refer to http://en.wikipedia.org/wiki/ISO_3166-1</p>	<OBSPRG_CODE>	Y
STAFF_CODE	Observer field staff NAME CODE. This will be unique and link to information kept at the regional level including Observer Name, Nationality of observer, Observer provider.	VarChar (5)	<p>Staff code must exist in the regional Observer (FIELD_STAFF) Name Table.</p> <p>The unique 5-letter staff codes are generated and maintained by SPC/FFA.</p>	<STAFF_CODE>	Y
TRIPNO	<p>Unique TRIPNO for each observer in a given year (Regional Standard)</p> <p>Use the last two digits of the trip year followed by a dash and increment number for each trip in a year <u>FOR THAT OBSERVER</u>. YY-XX, for example, '14-01' would represent the first trip for an observer in the calendar year 2014</p>	Char (5)	Must adhere to the regional standard	<TRIPNO>	N
TRIPNO_INTERNAL	TRIPNO as allocated and used by the respective Observer service provider. (If this system is different from the regional standard (e.g. the US PS MLT observer programme trip number uses the format '24LP/xxx')	VarChar (15)		<TRIPNO_INT>	N

OBS_TRIP

"The start of a trip is defined to occur when a vessel (a) leaves port after unloading part or all of the catch to transit to a fishing area or (b) recommences fishing operations or transits to a fishing area after transshipping part or all of the catch at sea (when this occurs in accordance with the terms and conditions of article 4 of Annex III of the Convention, subject to specific exemptions as per article 29 of the Convention)."

FIELD	Data Collection Instructions	Field format notes	Validation rules	XML TAG	WCPFC FIELD
DATE and TIME OF DEPARTURE	Depart DATE/TIME for the observer trip (Observer's departure) Vessel depart date/time will be obtained from other sources of data (e.g. VMS Data)	REFER TO APPENDIX A1	Use UTC DATE for the departure date.	<DEP_DATE>	Y
DATE AND TIME OF ARRIVAL IN PORT	Return DATE/TIME for the observer trip (from the observer's point of view) Vessel return date/time will be obtained from other sources of data (e.g. VMS Data)	REFER TO APPENDIX A1	Use UTC DATE for the return date. DD/MM/YY	<RET_DATE>	Y
GEAR_CODE	Link to ref_gears table	Char (1)	Must be a valid GEAR: 'L' - Longline; 'S' - Purse seine; 'P' - Pole-and-line	<GEAR_CODE>	Y
FISHING PERMIT/LICENSE NUMBERS	PROVIDE License/Permit number that the vessel holds for the period of the TRIP.	CHAR(40) UPPER CASE	Where possible, include validation to ensure the Permit format relevant to the agreement (national or sub-regional) complies to the required format.	<LICENSE_NO>	N
VESSEL IDENTIFIER		REFER TO APPENDIX A4			
VERSN ID	Data standards version	Int		<VERSN_ID>	N
COUNTRY_CODE	Two letter COUNTRY CODE for the country who organise the trip	Char (2)	Refer to valid ISO two-letter Country Codes - ISO 3166 For example, refer to http://en.wikipedia.org/wiki/ISO_3166-1	<COUNTRY_CODE>	Y
PORT OF DEPARTURE	PROVIDE the Port of Departure	REFER TO APPENDIX A3	Must be valid United Nations - Code for Trade and Transport Locations (UN/LOCODE) - see http://www.unece.org/cefact/locode/service/location	<DEP_PORT>	Y
PORT OF RETURN	PROVIDE the Port of Return for Unloading	REFER TO APPENDIX A3	Must be valid United Nations - Code for Trade and Transport Locations (UN/LOCODE)	<RET_PORT>	Y
DEP_LAT	The actual depart LAT position for the trip (if departing AT SEA)	REFER TO APPENDIX A2		<DEP_LAT>	Y
DEP_LON	The actual depart LON position for the trip (if departing AT SEA)	REFER TO APPENDIX A2		<DEP_LON>	Y
RET_LAT	The actual return LAT position for the trip (if departing AT SEA)	REFER TO APPENDIX A2		<RET_LAT>	Y
RET_LON	The actual return LON position for the trip (if departing AT SEA)	REFER TO APPENDIX A2		<RET_LON>	Y
VESOWNER	NAME of the vessel owner	NVarChar (50)		<VESOWNER>	Y
VESCAPTAIN	NAME of the captain of the vessel	NVarChar (50)		<VESCAPTAIN>	Y
VESCAPT_NATION	NATIONALITY of the captain of the vessel	Char (2)	Refer to valid ISO two-letter Country	<VESCAPT_CO_CODE>	Y

OBS_TRIP

“The start of a trip is defined to occur when a vessel (a) leaves port after unloading part or all of the catch to transit to a fishing area or (b) recommences fishing operations or transits to a fishing area after transshipping part or all of the catch at sea (when this occurs in accordance with the terms and conditions of article 4 of Annex III of the Convention, subject to specific exemptions as per article 29 of the Convention).”

FIELD	Data Collection Instructions	Field format notes	Validation rules	XML TAG	WCPFC FIELD
	Two letter COUNTRY CODE for the country who organise the trip		Codes - ISO 3166 For example, refer to http://en.wikipedia.org/wiki/ISO_3166-1		
VESCAPT_ID_DOC	Captain's Document ID	NVarChar (20)		<VESCAPT_ID_DOC>	Y
VESMASTER	NAME of the fishing master	NVarChar (50)		<VESMASTER>	
VESMAST_NATION	NATIONALITY of the vessel MASTER Two letter COUNTRY CODE for the country who organise the trip	Char (2)	Refer to valid ISO two-letter Country Codes - ISO 3166 For example, refer to http://en.wikipedia.org/wiki/ISO_3166-1	<VESCAPT_CO_CODE>	Y
VESMAST_ID_DOC	FISHING MASTERS's Document ID	NVarChar (20)		<VESCAPT_ID_DOC>	Y
CREW_NUMBER	Total number of CREW onboard during the trip	Int		<CREW_NUMBER>	Y
SPILL	FLAG to indicated the trip was a SPILL SAMPLE trip	Bit		<SPILL>	N
CADET	FLAG to indicated whether the trip was observed by a CADET observer	Bit		<CADET>	N
SHARKTARGET	FLAG to indicated a trip has targeted SHARKS (LONGLINE trips only)	Bit		<SHARKTARGET>	N
COMMENTS	General comments about the trip	NText		<COMMENTS>	N

1.3 DAILY SUMMARY DATA

PS OBS DAY					
The observer must provide the information in this table (daily logged DAY) for EACH DAY AT SEA for the period of the trip.					
FIELD	Data Collection Instructions	Field format notes	Validation rules	XML TAG	WCPFC FIELD
TRIP IDENTIFIER	Internally generated. Can be NATURAL KEY or unique integer. NATURAL KEY would be VESSEL + DEPARTURE DATE			<OBSTRIP_ID>	Y
DAY LOG IDENTIFIER	Internally generated. Can be NATURAL KEY or unique integer. NATURAL KEY would be VESSEL + DEPARTURE DATE + LOCAL DAY LOG DATE			<S_DAY_ID>	Y
DAY_START	Local Date and time at the start of the logged date.	REFER TO APPENDIX A1		<START_DATE>	Y
UTC DAY START	UTC equivalent of DAY START	REFER TO APPENDIX A1		<UTC_START_DATE>	Y
LOG_NOFISH_N	For the entire logged day, provide the Number of logs sighted but no schools association.	SmallInt		<LOG_NOFISH_N>	Y
LOG_FISH_N	For the entire logged day, provide the Number of log associated schools sighted.	SmallInt		<LOG_FISH_N>	Y
SCH_FISH_N	For the entire logged day, provide the	SmallInt		<SCH_FISH_N>	Y
FAD_FISH_N	For the entire logged day, provide the Number of anchored FADs sighted.	SmallInt		<FAD_FISH_N>	Y
FAD_NOFISH_N	For the entire logged day, provide the Number of anchored FADs sighted but no schools association.	SmallInt		<FAD_NOFISH_N>	Y
GEN3TODAY_ANS	For the entire logged day, provide the FLAG to indicate that incident has occurred on GEN3.	Char (1)	Must be consistent with the GEN-3 data.	<GEN3TODAY_ANS>	N
DIARYPAGE	Journal page # which has detail explanations of the incident	VarChar (50)		<DIARYPAGE>	N

1.4 ACTIVITY LOG DATA

PS OBS ACTIVITY					
The observer must PROVIDE a record of EACH change in ACTIVITY for EACH DAY AT SEA for the period of the trip. This is effectively the OBSERVER's ACTIVITY LOG					
FIELD	Data Collection Instructions	Field format notes	Validation rules	XML TAG	WCPFC FIELD
TRIP IDENTIFIER	Internally generated. Can be NATURAL KEY or unique integer. NATURAL KEY would be VESSEL + DEPARTURE DATE			<OBSTRIP_ID>	Y
ACTIVITY LOG IDENTIFIER	Internally generated. Can be NATURAL KEY or unique integer. NATURAL KEY would be VESSEL + DEPARTURE DATE + DAY LOG DATE + ACTIVITY LOG TIME			<S_LOG_ID>	Y
ACT_DATE	Local/Ship's date and time of Activity log recording.	REFER TO APPENDIX A1	Must be consistent with the start of DAY log DATE	<ACT_DATE>	Y
UTC_ACT_DATE	UTC equivalent of ACT DATE	REFER TO APPENDIX A1		<UTC_ACT_DATE>	Y
LAT	Latitude at which this ACTIVITY LOG recorded	REFER TO APPENDIX A2		<LAT>	Y
LON	Longitude at which this ACTIVITY LOG recorded.	REFER TO APPENDIX A2		<LON>	Y
S_ACTIV_ID	Purse seine activity code.	REFER TO APPENDIX A5		<S_ACTIV_ID>	Y
SCHAS_ID	School association code.	REFER TO APPENDIX A6		<SCHAS_ID>	Y
DETON_ID	Detection id. code. Must be 1-6 or 0 for no information.	REFER TO APPENDIX A7		<DETON_ID>	Y
BEACON	Beacon number where	NVarChar (20)	Can only be recorded where an activity is related to an event for investigating, deploying, retrieving or setting on a floating object. REFER TO APPENDIX A5	<BEACON>	N
COMMENTS	Observer comments related to this activity	NText		<COMMENTS>	N

1.5 SET-LEVEL DATA

PS OBS SET						
The observer must PROVIDE the following information for EACH FISHING SET for the period of the trip.						
FIELD	Data Collection Instructions		Field format notes	Validation rules	XML TAG	WCPFC FIELD
TRIP IDENTIFIER	Internally generated. Can be NATURAL KEY or unique integer. NATURAL KEY would be VESSEL + DEPARTURE DATE				<OBSTRIP_ID>	Y
SET IDENTIFIER	Internally generated. Can be NATURAL KEY or unique integer. NATURAL KEY would be VESSEL + DEPARTURE DATE + SET START DATE + SET START TIME			Must be consistent with PS_OBS_ACTIVITY record where S_ACTIV_ID = 1 (A fishing set).	<S_SET_ID>	Y
SET NUMBER	Unique # for the SET ni this trip		Int		<SET_NUMBER>	N
SKIFFOFF_TIME	DEFINED as the START of SET - Local DATE/Time when net skiff off with net		REFER TO APPENDIX A1		<SKIFFOFF_TIME>	Y
SKIFFOFF UTC	UTC DATE & TIME of START of SET		REFER TO APPENDIX A1	Must be aligned to SKIFFOFF_TIME	<SKIFFOFF.UTC>	Y
WINCHON_TIME	LOCAL DATE/TIME when winches start to haul the net.		REFER TO APPENDIX A1		<WINCHON_TIME>	Y
WINCHON.UTC	UTC DATE & TIME when winches start to haul the net.		REFER TO APPENDIX A1	Must be aligned to WINCHON_TIME	<WINCHON.UTC>	Y
RINGUP_TIME	LOCAL DATE/TIME when purse ring is raised from the water.		REFER TO APPENDIX A1		<RINGUP_TIME>	Y
RINGUP.UTC	UTC DATE & TIME when purse ring is raised from the water.		REFER TO APPENDIX A1	Must be aligned to RINGUP_TIME	<RINGUP.UTC>	Y
SBRAIL_TIME	LOCAL DATE/TIME when brailing begins.		REFER TO APPENDIX A1		<SBRAIL_TIME>	Y
SBRAIL.UTC	UTC DATE & TIME when brailing begins.		REFER TO APPENDIX A1	Must be aligned to SBRAIL_TIME	<SBRAIL.UTC>	Y
EBRAIL_TIME	LOCAL DATE/TIME when brailing ends.		REFER TO APPENDIX A1		<EBRAIL_TIME>	Y
EBRAIL.UTC	UTC DATE & TIME when brailing ends.		REFER TO APPENDIX A1	Must be aligned to EBRAIL_TIME	<EBRAIL.UTC>	Y
STOP_TIME	LOCAL DATE/TIME for the END of SET - Time when net skiff comes on-board i.e. end of set.		REFER TO APPENDIX A1		<STOP_TIME>	Y
STOP.UTC	UTC DATE & TIME - Date & Time when net skiff comes on-board i.e. end of set.		REFER TO APPENDIX A1	Must be aligned to STOP_TIME	<STOP.UTC>	Y
LD_BRAILS	Sum of all brails		Decimal (8,3)		<LD_BRAILS>	N
LD_BRAILS2	Sum of brails (#2) - only where a second type of brailer was used		Decimal (8,3)		<LD_BRAILS2>	N
MTTOTAL_OBS	Total observed catch (TUNA and BYCATCH) (mt)		Decimal (8,3)		<MT_TOTAL_OBS>	Y
MTTUNA_OBS	TOTAL amount of TUNA observed (mt)		Decimal (8,3)	Derived from and consistent with MTTOTAL_OBS minus all the bycatch (mt) listed under PS_OBS_CATCH for this SET	<MTTUNA_OBS>	Y
TOTSKJ_ANS	SKIPJACK	FLAG to indicate whether SKJ is presence in the set catch	Char (1)		<TOTSKJ_ANS>	Y
PERC_SKJ		% of SKJ in the set catch	Int		<PERC_SKJ>	Y
MTSKJ_OBS		Metric Tonnes of SKJ in the set catch	Decimal (8,3)	Determined from MTTUNA_OBS and PERC_SKJ fields	<MTSKJ_OBS>	Y
TOTYFT_ANS	YEL LOW FIN	FLAG to indicate whether YFT is presence in the set catch	Char (1)		<TOTYFT_ANS>	Y
PERC_YFT		% of YFT in the set catch	Int		<PERC_YFT>	Y

PS_OBS_SET

The observer must PROVIDE the following information for EACH FISHING SET for the period of the trip.

FIELD	Data Collection Instructions	Field format notes	Validation rules	XML TAG	WCPFC FIELD
MTYFT_OBS	Metric Tonnes of YFT in the set catch	Decimal (8,3)	Determined from MTTUNA_OBS and PERC_YFT fields	<MTYFT_OBS>	Y
LARGE_YFT_ANS		Char (1)		<LARGE_YFT_ANS>	Y
PERC_LARGE_YFT		Int		<PERC_LARGE_YFT>	Y
NB_LARGE_YFT		Int		<NB_LARGE_YFT>	Y
TOTBET_ANS	BIGEYE Metric Tonnes of BET in the set catch	Char (1)	Determined from MTTUNA_OBS and PERC_BET fields	<TOTBET_ANS>	Y
PERC_BET		Int		<PERC_BET>	Y
MTBET_OBS		Char (1)		<LARGE_BET_ANS>	Y
LARGE_BET_ANS		Int		<PERC_LARGE_BET>	Y
PERC_LARGE_BET		Int		<NB_LARGE_BET>	Y
NB_LARGE_BET		Int		<NB_LARGE_BET>	Y
COMMENTS	comments	NText		<COMMENTS>	N
B_NBTAGS	Number of tags	SmallInt		<B_NBTAGS>	Y

1.6 SET CATCH DATA

PS_OBS_CATCH					
The observer must PROVIDE the following CATCH DETAILS for EACH FISHING SET for the period of the trip.					
FIELD	Data Collection Instructions	Field format notes	Validation rules	XML TAG	WCPFC FIELD
TRIP IDENTIFIER	Internally generated. Can be NATURAL KEY or unique integer. NATURAL KEY would be VESSEL + DEPARTURE DATE			<OBSTRIP_ID>	Y
SET IDENTIFIER	Internally generated. Can be NATURAL KEY or unique integer. NATURAL KEY would be VESSEL + DEPARTURE DATE + SET START DATE + SET START TIME		Must be consistent with PS_OBS_ACTIVITY record where S_ACTIV_ID = 1 (A fishing set).	<S_SET_ID>	Y
CATCH IDENTIFIER	Internally generated. Can be NATURAL KEY or unique integer. NATURAL KEY would be VESSEL + DEPARTURE DATE + SET START DATE + SET START TIME + SPECIES CODE + FATE CODE			<S_CATCH_ID>	Y
SP_CODE	Species code.	Char (3)	REFER TO APPENDIX 8.	<SP_CODE>	Y
FATE_CODE	FATE of this catch. This indicates whether it was RETAINED, DISCARDED or ESCAPED, and any specific processing.	Char (3)	REFER TO APPENDIX 9	<FATE_CODE>	Y
COND_CODE	CONDITION of this catch. Relevant for the Species of Special Interest.	Char (2)	REFER TO APPENDIX 10	<COND_CODE>	Y
OBS_MT	Observer's visual estimate of TOTAL Species catch in metric tonnes. OBTAINED from the visual estimate of % of TUNA SPECIES in the respective fields for SKJ, YFT and BET in the table PS_OBS_SET. For BYCATCH species, this is the visual estimate, where relevant.	Decimal (8,3)		<OBS_MT>	Y
OBS_N	Species catch (in numbers). OBTAINED from the visual estimate, which may be relevant for DISCARDS of TUNA, the discards/retained catch of BILLFISH and most other bycatch species. Entry into this field is mandatory for any Species of Special interest.	Int	For Species of Special interest (Mammals, Turtles, Birds and Sharks) there must be a corresponding set of records in the Species of Special interest table.	<OBS_N>	Y
COMMENTS	Are there any comments for this species catch ? (Y/N)	NText		<COMMENTS>	N

1.7 SPECIES OF SPECIAL INTEREST DATA

OBS_SSI					
The observer must PROVIDE the following SPECIES OF SPECIAL INTEREST CATCH DETAILS for EACH FISHING SET for the period of the trip. There may be one or many records for each SSI record in PS_OBS_CATCH. When SIGHTED only, then this table is linked to the OBS_TRIP database table.					
FIELD	Data Collection Instructions	Field format notes	Validation rules	XML TAG	WCPFC FIELD
TRIP IDENTIFIER	Internally generated. Can be NATURAL KEY or unique integer. NATURAL KEY would be VESSEL + DEPARTURE DATE			<OBSTRIP_ID>	Y
SET IDENTIFIER - PS	Internally generated. Can be NATURAL KEY or unique integer. NATURAL KEY would be VESSEL + DEPARTURE DATE + SET START DATE + SET START TIME		To be used to link to PS OBS SET when relevant When SGTYPE = 'L' or 'I' Must be consistent with PS_OBS_ACTIVITY record where S_ACTIV ID = 1 (A fishing set).	<S_SET_ID>	Y
CATCH IDENTIFIER - PS	Internally generated. Can be NATURAL KEY or unique integer. NATURAL KEY would be VESSEL + DEPARTURE DATE + SET START DATE + SET START TIME + SPECIES CODE + FATE CODE		To be used to link to PS OBS CATCH when relevant When SGTYPE = 'L' or 'I' Must be a link to the corresponding PS_OBS_CATCH record for this SSI	<S_CATCH_ID>	Y
SET IDENTIFIER - LL	Internally generated. Can be NATURAL KEY or unique integer. NATURAL KEY would be VESSEL + DEPARTURE DATE + SET START DATE + SET START TIME		To be used to link to LL_OBS_SET when relevant When SGTYPE = 'L' or 'I' Must be consistent with PS_OBS_ACTIVITY record where S_ACTIV ID = 1 (A fishing set).	<L_SET_ID>	Y
CATCH IDENTIFIER - LL	Internally generated. Can be NATURAL KEY or unique integer. NATURAL KEY would be VESSEL + DEPARTURE DATE + SET START DATE + SET START TIME + SPECIES CODE + FATE CODE		To be used to link to LL OBS CATCH when relevant When SGTYPE = 'L' or 'I' Must be a link to the corresponding PS_OBS_CATCH record for this SSI	<L_CATCH_ID>	Y
SSI CATCH IDENTIFIER	Internally generated. Can be NATURAL KEY or unique integer. NATURAL KEY would be VESSEL + DEPARTURE DATE + DAY LOG + SIGHTING TIME + SPECIES CODE + FATE CODE			<SSI_ID>	Y
SGTYPE	Type of Interaction : 'L' - Landed; "S"- Sighted; "I" - Interacted with Gear	Char (1)	Must be 'L' - Landed; "S"- Sighted; "I" - Interacted with Gear	<SGTYPE>	Y
SGTIME	Time of Interaction : 'L' - Time of Landing; "I" - Time of Interaction / sighting	Char (1)		<SGTIME>	Y
SSI_DATE	Local/Ship's date and time when	REFER TO	When SGTYPE = 'L' or 'I'	<SSI_DATE>	Y

OBS_SSI

The observer must PROVIDE the following SPECIES OF SPECIAL INTEREST CATCH DETAILS for EACH FISHING SET for the period of the trip. There may be one or many records for each SSI record in PS_OBS_CATCH. When SIGHTED only, then this table is linked to the OBS TRIP database table.

FIELD	Data Collection Instructions	Field format notes	Validation rules	XML TAG	WCPFC FIELD
	this SSI was encountered.	APPENDIX A1	Must be consistent with PS_OBS_ACTIVITY record - ACT_DATE		
UTC_SSI_DATE	UTC equivalent of SSI_DATE	REFER TO APPENDIX A1	When SGTYPE = 'L' or 'I' Must be consistent with PS_OBS_ACTIVITY record - UTC ACT_DATE	<UTC_SSI_DATE>	Y
LAT	Latitude at which this SSI was encountered	REFER TO APPENDIX A2	When SGTYPE = 'L' or 'I' Must be consistent with PS_OBS_ACTIVITY record - LAT	<LAT>	Y
LON	Longitude at which this SSI was encountered	REFER TO APPENDIX A2	When SGTYPE = 'L' or 'I' Must be consistent with PS_OBS_ACTIVITY record - LON	<LON>	Y
SP_CODE	SSI Species encountered. Link to species table	Char (3)	REFER TO APPENDIX 8. Must correspond to the PS_OBS_CATCH record	<SP_CODE>	Y
SP_DESC	Extended Species Description	NText		<SP_DESC>	N
LANDED_COND_CODE	Condition code on LANDING	Char (2)	REFER TO APPENDIX 10	<LANDED_COND_CODE>	Y
LANDED_COND_DESC	Description of Condition on Landing or at start of interaction with vessel's gear	NText		<LANDED_COND_DESC>	Y
LANDED_HANDLING	Description of handling on landing	NText		<LANDED_HANDLING>	N
LANDED_LEN	Length of landed species	Decimal (5,1)		<LANDED_LEN>	Y
LEN_CODE	Length code of the individual	Char (2)	REFER TO APPENDIX 11	<LEN_CODE>	Y
LANDED_SEX_CODE	Sex code of the individual	Char (1)	REFER TO APPENDIX 12	<LANDED_SEX_CODE>	Y
DISCARD_COND_CODE	Condition code on RELEASE/DISCARD, or at the END of interaction with vessel's gear	Char (2)	REFER TO APPENDIX 10	<DISCARD_COND_CODE>	Y
DISCARD_COND_DESC	Description of Condition on RELEASE/DISCARD, or at the END of interaction with vessel's gear	NText		<DISCARD_COND_DESC>	Y
SHK_FIN_WT_KGS	Estimated SHARK FIN WEIGHT (kgs)	Decimal (5,0)		<SHK_FIN_WT_KGS>	Y
SHK_FIN_BODY_KGS	Estimated SHARK CARCASS WEIGHT (kgs)	Decimal (5,0)		<SHK_FIN_BODY_KGS>	Y
TAG_RET_NO	Tag Number recovered from animal	NVarChar (7)		<TAG_RET_NO>	Y
TAG_RET_TYPE	Type of Tag recovered from animal	NVarChar (5)		<TAG_RET_TYPE>	Y
TAG_RET_ORG	Origin of Tag recovered from animal (Organisation)	NVarChar (10)		<TAG_RET_ORG>	Y
TAG_PLACE_NO	Tag number placed on animal	NVarChar (14)		<TAG_PLACE_NO>	Y
TAG_PLACE_TYPE	Type of Tag placed on animal	NVarChar (8)		<TAG_PLACE_TYPE>	Y
TAG_PLACE_ORG	Origin of Tag placed on animal (Organisation)	NVarChar (10)		<TAG_PLACE_ORG>	Y
INTACT_ID	Vessel activity when INTERACTION occurs	Int	REFER TO APPENDIX 13	<INTACT_ID>	Y

OBS_SSI

The observer must PROVIDE the following SPECIES OF SPECIAL INTEREST CATCH DETAILS for EACH FISHING SET for the period of the trip. There may be one or many records for each SSI record in PS_OBS_CATCH. When SIGHTED only, then this table is linked to the OBS_TRIP database table.

FIELD	Data Collection Instructions	Field format notes	Validation rules	XML TAG	WCPFC FIELD
INTACT_OTHER	Other types of interaction	NVarChar (20)		<INTACT_OTHER>	Y
INT_DESCRIBE	Description of the interaction	NText		<INT_DESCRIBE>	Y
SGACT_ID	Vessel activity when SIGHTING occurs	Int	REFER TO APPENDIX 13	<SGACT_ID>	Y
SGACT_OTHER	Indicates "other" Vessel Activity	NVarChar (20)		<SGACT_OTHER>	N
SIGHT_N	Number of individuals sighted	SmallInt		<SIGHT_N>	Y
SIGHT_ADULT_N	Number of adults sighted	SmallInt		<SIGHT_ADULT_N>	N
SIGHT_JUV_N	Number of juveniles sighted	SmallInt		<SIGHT_JUV_N>	N
SIGHT_LEN	Estimated overall length (Average if more than one individual)	NText		<SIGHT_LEN>	N
SIGHT_DIST	Distance of sighted animals from vessel	Decimal (7,3)		<SIGHT_DIST>	N
SIGHT_DIST_UNIT	Units used for SIGHT DIST	INT	1 = Metres; 2 = kilometres; 3 = Nautical miles	<SIGHT_DIST_UNIT>	N
SIGHT_DIST_NM	Distance in nautical miles	Decimal (10,4)		<SIGHT_DIST_NM>	N
SIGHT_BEHAV	Description of behaviour of Sighted animals	NText		<SIGHT_BEHAV>	N

1.8 SPECIES OF SPECIAL INTEREST DETAILS DATA

OBS_SSI_DETAILS					
The observer must PROVIDE the following SPECIES OF SPECIAL INTEREST CATCH DETAILS for EACH FISHING SET for the period of the trip. The specific detail of each interaction needs to be recorded/stored here.					
FIELD	Data Collection Instructions	Field format notes	Validation rules	XML TAG	WCPFC FIELD
TRIP IDENTIFIER	Internally generated. Can be NATURAL KEY or unique integer. NATURAL KEY would be VESSEL + DEPARTURE DATE			<OBSTRIP_ID>	Y
SSI CATCH IDENTIFIER	Internally generated. Can be NATURAL KEY or unique integer. NATURAL KEY would be VESSEL + DEPARTURE DATE + DAY LOG + SIGHTING TIME + SPECIES CODE + FATE CODE		Link to OBS_SSI table	<SSI_ID>	Y
SSI DETAILS IDENTIFIER	Internally generated. Can be NATURAL KEY or unique integer. NATURAL KEY would be VESSEL + DEPARTURE DATE + DAY LOG + SIGHTING TIME + SPECIES CODE + FATE CODE			<SSI_DET_ID>	Y
START_END	Indication of "START" or "END" of interaction	Char (1)	Must be either 'S' for START or 'E' for END	<START_END>	Y
SSI_NUMBER	Number of animals interacted	Int		<SSI_NUMBER>	Y
COND_CODE	CONDITION at the point of recording (either START or END)	Char (2)	REFER TO APPENDIX 10	<COND_CODE>	Y
DESCRIPTION	Descriptions of the interaction	VarChar (100)		<DESCRIPTION>	N

1.9 LENGTH SAMPLE DATA

PS_LFSAMPLE					
PROVIDE the information related to the size (length) and species composition SAMPLE from each FISHING SET.					
FIELD	Data Collection Instructions	Field format notes	Validation rules	XML TAG	WCPFC FIELD
TRIP IDENTIFIER	Internally generated. Can be NATURAL KEY or unique integer. NATURAL KEY would be VESSEL + DEPARTURE DATE			<OBSTRIP_ID>	Y
SET IDENTIFIER	Internally generated. Can be NATURAL KEY or unique integer. NATURAL KEY would be VESSEL + DEPARTURE DATE + SET START DATE + SET START TIME			<S_SET_ID>	Y
LF SAMPLE IDENTIFIER	Internally generated. Can be NATURAL KEY or unique integer. NATURAL KEY would be VESSEL + DEPARTURE DATE + DAY LOG + SET START DATE + SET START TIME + SAMPLE_TYPE			<S_LFSAMP_ID>	Y
SAMPLETYPE ID	Sample Type	CHAR(1)	REFER TO APPENDIX 14	<SAMPLETYPE_ID>	Y
OTHER_DESC	Description other sampling type	NText		<OTHER_DESC>	N
FISH_PER_BRAIL	Target # of fish for sampling	SmallInt		<FISH_PER_BRAIL>	N
MEASURE_CODE	MEASURING INSTRUMENT	Char (1)	REFER TO APPENDIX 15	<MEASURE_CODE>	N
COMMENTS	Comments about the sampling	NText		<COMMENTS>	N
BRAIL_FULL_N	# of Full brail count	SmallInt		<BRAIL_FULL_N>	N
BRAIL_78_N	# of Seven eighths brail count	SmallInt		<BRAIL_78_N>	N
BRAIL_34_N	# of Three quarter brail count	SmallInt		<BRAIL_34_N>	N
BRAIL_23_N	# of Two third brail count	SmallInt		<BRAIL_23_N>	N
BRAIL_12_N	# of Half brail count	SmallInt		<BRAIL_12_N>	N
BRAIL_13_N	# of One third brail count	SmallInt		<BRAIL_13_N>	N
BRAIL_14_N	# of One quarter brail count	SmallInt		<BRAIL_14_N>	N
BRAIL_18_N	# of One eighth brail count	SmallInt		<BRAIL_18_N>	N
BRAIL_N	Total number of brails	SmallInt		<BRAIL_N>	N
SUM_BRAILS	Sum of All Brails	Decimal (7,2)		<SUM_BRAILS>	N
SAMPLED_BRAIL_NUM	# of sampled brail	Int		<SAMPLED_BRAIL_NUM>	N
MEASURED_N	# of samples measured	Int		<MEASURED_N>	N

1.10 INDIVIDUAL LENGTH DATA

PS_LFMEAS					
PROVIDE the individual fish measurements from the SAMPLE from each FISHING SET.					
FIELD	Data Collection Instructions	Field format notes	Validation rules	XML TAG	WCFC FIELD
TRIP IDENTIFIER	Internally generated. Can be NATURAL KEY or unique integer. NATURAL KEY would be VESSEL + DEPARTURE DATE			<OBSTRIP_ID>	Y
SET IDENTIFIER	Internally generated. Can be NATURAL KEY or unique integer. NATURAL KEY would be VESSEL + DEPARTURE DATE + SET START DATE + SET START TIME			<S_SET_ID>	Y
LF SAMPLE IDENTIFIER	Internally generated. Can be NATURAL KEY or unique integer. NATURAL KEY would be VESSEL + DEPARTURE DATE + DAY LOG + SET START DATE + SET START TIME + SAMPLE TYPE			<S_LFSAMP_ID>	Y
LF MEASURE IDENTIFIER	Internally generated. Can be NATURAL KEY or unique integer. NATURAL KEY would be VESSEL + DEPARTURE DATE + DAY LOG + SET START DATE + SET START TIME + SAMPLE TYPE + SEQ_NUMBER			<S_LFMEAS_ID>	Y
SEQ_NUMBER	Measurement number.	Int		<SEQ_NUMBER>	N
SP_CODE	Link to species table	Char (3)	REFER TO APPENDIX 8.	<SP_CODE>	Y
LEN	Length (cm). Expect that the following measurements have been taken by the observers, as instructed. TUNA SPECIES - Upper jaw to fork length; SHARK SPECIES - total length; BILLFISH SPECIES - Lower jaw to fork length for billfish.	SmallInt		<LEN>	Y

1.11 TRIP MONITORING QUESTIONS

OBS_TRIPMON					
PROVIDE the details of the OBSERVER GEN-3 "OBSERVER VESSEL TRIP MONITORING FORM". One record per question.					
FIELD	Data Collection Instructions	Field format notes	Validation rules	XML TAG	WCPFC FIELD
TRIP IDENTIFIER	Internally generated. Can be NATURAL KEY or unique integer. NATURAL KEY would be VESSEL + DEPARTURE DATE			<OBSTRIP_ID>	Y
TRIP MONITORING IDENTIFIER	Internally generated. Can be NATURAL KEY or unique integer. NATURAL KEY would be VESSEL + DEPARTURE DATE + UNIQUE SEQ NUMBER			<TRIPMON_ID>	Y
QUESTION_CODE	Unique CODE for each question in GEN3	Char (4)	REFER TO APPENDIX 16	<QUESTION_CODE>	Y
ANSWER	FLAG to indicate whether has been answered or NOT	Char (1)	MUST BE 'Y', 'N' or 'X'- not answered	<ANSWER>	Y
JOURNAL_PAGE	Detail description of the incident	NText		<JOURNAL_PAGE>	Y

1.12 TRIP MONITORING COMMENTS

OBS_TRIPMON_COMMENTS					
PROVIDE the details of the OBSERVER GEN-3 "OBSERVER VESSEL TRIP MONITORING FORM". One record per day of trip monitoring reported event/incident.					
FIELD	Data Collection Instructions	Field format notes	Validation rules	XML TAG	WCPFC FIELD
TRIP IDENTIFIER	Internally generated. Can be NATURAL KEY or unique integer. NATURAL KEY would be VESSEL + DEPARTURE DATE			<OBSTRIP_ID>	Y
TRIP MONITORING COMMENTS IDENTIFIER	Internally generated. Can be NATURAL KEY or unique integer. NATURAL KEY would be VESSEL + DEPARTURE DATE + UNIQUE SEQ NUMBER			<TRIPMON_DET_ID>	Y
GEN3_DATE	Date of the incident on GEN3	REFER TO APPENDIX A1		<GEN3_DATE>	Y
COMMENTS	Detail description of the incident	NText		<COMMENTS>	Y

1.13 VESSEL/AIRCRAFT SIGHTINGS DATA

VES AIR SIGHT					
PROVIDE the details on the GEN-1 form -- VESSEL AND AIRCRAFT SIGHTINGS / FISH, BUNKERING and OTHER TRANSFERS LOGS					
FIELD	Data Collection Instructions	Field format notes	Validation rules	XML TAG	WCPFC FIELD
TRIP IDENTIFIER	Internally generated. Can be NATURAL KEY or unique integer. NATURAL KEY would be VESSEL + DEPARTURE DATE			<OBSTRIP_ID>	Y
SIGHTING IDENTIFIER	Internally generated. Can be NATURAL KEY or unique integer. NATURAL KEY would be VESSEL + DEPARTURE DATE + SIGHT DATE TIME			<SIGHT_ID>	Y
SIGHT_DATE_TIME	Date/Time of sighting	REFER TO APPENDIX A1		<SIGHTING_DATE>	Y
LAT	Latitude of SIGHTING	REFER TO APPENDIX A2		<LAT>	Y
LON	Longitude of SIGHTING	REFER TO APPENDIX A2		<LON>	Y
VESSEL IDENTIFIER	REFER TO APPENDIX A4				
VATYP ID	Vessel / Aircraft type	Int	REFER TO APPENDIX 17	<VATYP_ID>	Y
BEARING DIR	Bearing (0-360 degrees)	SmallInt		<BEARING_DIR>	Y
DISTANCE	Distance	Decimal (7,3)		<DISTANCE>	Y
DIST_UNIT	Units of Distance	INT	1 = Metres; 2 = kilometres; 3 = Nautical miles	<DIST_UNIT>	Y
ACTION_CODE	Action of Vessel/Aircraft sighted	Char (2)	REFER TO APPENDIX 18 for Vessel/Aircraft sightings only - only allow actions where FORM USED = 'GEN-1'	<ACTION_CODE>	Y
COMMENTS	Comments	NText		<COMMENTS>	Y

1.14 CREW DATA

PS CREW					
PROVIDE the details of each PURSE SEINE CREW member on this TRIP.					
FIELD	Data Collection Instructions	Field format notes	Validation rules	XML TAG	WCPFC FIELD
TRIP IDENTIFIER	Internally generated. Can be NATURAL KEY or unique integer. NATURAL KEY would be VESSEL + DEPARTURE DATE			<OBSTRIP_ID>	Y
CREW IDENTIFIER	Internally generated. Can be NATURAL KEY or unique integer. NATURAL KEY would be VESSEL + DEPARTURE DATE + CREW NAME			<S_CREW_ID>	Y
VSJOB_ID	CREW JOB TYPE	Int	REFER TO APPENDIX 19	<VSJOB_ID>	N
NAME	Name of the person in this position	NVarChar (50)		<NAME>	Y
COUNTRY_CODE	Nationality of the person in this position	Char (2)	Refer to valid ISO two-letter Country Codes - ISO 3166 For example, refer to http://en.wikipedia.org/wiki/ISO_3166-1	<COUNTRY_CODE>	Y
EXP_YR	Experience in Years	SmallInt		<EXP_YR>	N
EXP_MO	Experience in months	SmallInt		<EXP_MO>	N
COMMENTS	Comments	NText		<COMMENTS>	N

1.15 MARINE DEVICES DATA

VES_ELEC					
PROVIDE information on the standard Marine Electronic devices.					
FIELD	Data Collection Instructions	Field format notes	Validation rules	XML TAG	WCPFC FIELD
TRIP IDENTIFIER	Internally generated. Can be NATURAL KEY or unique integer. NATURAL KEY would be VESSEL + DEPARTURE DATE			<OBSTRIP_ID>	Y
TRIP/VESSEL DEVICE IDENTIFIER	Internally generated. Can be NATURAL KEY or unique integer. NATURAL KEY would be VESSEL + DEPARTURE DATE + DEVICE ID			<V_DEVICE_ID>	Y
DEVICE_ID	Marine Device CODE.	Int	Refer to APPENDIX 20 - the DEVICES should only be available according to the respective gear code (e.g. "S" for purse seine or "L" for longline is in the GEAR LIST CODES column)	<DEVICE_ID>	Y
ONBOARD_CODE	Is this DEVICE SIGHTED ONBOARD ?	Char (1)	'Y' or 'N'	<ONBOARD_CODE>	Y
USAGE_CODE	Is this DEVICE USED ?	Char (3)	Refer to APPENDIX 21	<USAGE_CODE>	N
MAKE_DESC	Description of Make	NVarChar (30)		<MAKE_DESC>	N
MODEL_DESC	Description of Model	NVarChar (30)		<MODEL_DESC>	N
COMMENTS	Comments	NText		<COMMENTS>	N

1.16 WELL TRANSFER DATA

WELL TRANSFER PROVIDE information for each transfer to/from storage WELLS during the trip. This may become mandatory WCPFC data collection related to CDS.					
FIELD	Data Collection Instructions	Field format notes	Validation rules	XML TAG	WCPFC FIELD
TRIP IDENTIFIER	Internally generated. Can be NATURAL KEY or unique integer. NATURAL KEY would be VESSEL + DEPARTURE DATE			<OBSTRIP_ID>	N
WELL TRANSFER IDENTIFIER	Internally generated. Can be NATURAL KEY or unique integer. NATURAL KEY would be VESSEL + DEPARTURE DATE + TRX_DATE			<S_WELL_TRX_ID>	N
TRX_DATE	DATE and TIME of fish transfer	REFER TO APPENDIX A1		<TRX_DATE>	N
ACTION_CODE	WELL TRANSFER ACTION CODE	Char (2)	REFER TO APPENDIX 18 for Well transfers only - only allow actions where FORM USED = 'PS-5	<ACTION_CODE>	N
SOURCE	Fish transfer source Can be the 'NET' and valid well number or a VESSEL	VarChar (80)	Can be the 'NET' and valid well number or a VESSEL	<SOURCE>	N
DESTINATION	Description of the transfer destination Can be Well No., vessel, SHORE or DISCARD	VarChar (80)	Can be Well No., vessel, SHORE or DISCARD	<DESTINATION>	N
WELL_MT	Weight of the fish transfer	Decimal (8,3)		<WELL_MT>	N
CHANGE	Change of transfer - add or remove	Char (1)	Must be either '+', '-' or '0' (for no change)	<CHANGE>	N
NEW_TOTAL	New cumulative to for the transfer	Decimal (8,3)		<NEW_TOTAL>	N
ON_LOGSHEET	FLAG to indicate the transfer has been stated on the logsheet	Char (1)		<ON_LOGSHEET>	N
COMMENTS	Comments made on the fish transfer	NText		<COMMENTS>	N

1.17 PURSE SEINE GEAR DATA

PS GEAR					
PROVIDE information on the PURSE SEINE GEAR on the vessel.					
FIELD	Data Collection Instructions	Field format notes	Validation rules	XML TAG	WCPFC FIELD
TRIP IDENTIFIER	Internally generated. Can be NATURAL KEY or unique integer. NATURAL KEY would be VESSEL + DEPARTURE DATE			<OBSTRIP_ID>	Y
PS GEAR IDENTIFIER	Internally generated. Can be NATURAL KEY or unique integer. NATURAL KEY would be VESSEL + DEPARTURE DATE			<S_GEAR_ID>	Y
PB_MAKE	Power block make	NVarChar (20)		<PB_MAKE>	N
PB_MODEL	Power block model	NVarChar (20)		<PB_MODEL>	N
PW_MAKE	Purse winch make	NVarChar (20)		<PW_MAKE>	N
PW_MODEL	Purse winch model	NVarChar (20)		<PW_MODEL>	N
NET_DEPTH	Max depth of the net	SmallInt		<NET_DEPTH>	Y
NET_DEPTH_UNIT_ID	Net Depth unit of measurement M - metres; Y- Yards; F-Fathoms	Int	Must be M, Y, F or blank	<NET_DEPTH_UNIT_ID>	Y
NET_LENGTH	Max length of the net	SmallInt		<NET_LENGTH>	Y
NET_LENGTH_UNIT_ID	Net Length unit of measurement M - metres; Y- Yards; F-Fathoms	Int	Must be M, Y, F or blank	<NET_LENGTH_UNIT_ID>	Y
NET_STRIPS	Number of net strips	SmallInt		<NET_STRIPS>	N
NET_HANG_RATIO	Max net hang ratio	SmallInt		<NET_HANG_RATIO>	N
MESH_MAIN	Main Mesh size	SmallInt		<MESH_MAIN>	Y
MESH_MAIN_UNIT_ID	Main mesh size unit of measurement C - centimetres; I - Inches	Int	Must be C, I or blank	<MESH_MAIN_UNIT_ID>	Y
BRAIL_SIZE1	Brail #1 Capacity	Decimal (5,1)		<BRAIL_SIZE1>	Y
BRAIL_SIZE2	Brail #2 Capacity	Decimal (5,1)		<BRAIL_SIZE2>	Y
BRAIL_TYPE	Brailing Type Description	NText		<BRAIL_TYPE>	Y

1.18 FAD MATERIAL DATA

PS FAD MATERIAL					
PROVIDE information on the FAD MATERIAL observed during the trip.					
FIELD	Data Collection Instructions	Field format notes	Validation rules	XML TAG	WCPFC FIELD
TRIP IDENTIFIER	Internally generated. Can be NATURAL KEY or unique integer. NATURAL KEY would be VESSEL + DEPARTURE DATE			<OBSTRIP_ID>	Y
FAD EVENT IDENTIFIER	Internally generated. Can be NATURAL KEY or unique integer. NATURAL KEY would be VESSEL + DEPARTURE DATE + FAD EVENT DATE/TIME			<FAD_ID>	Y
FAD_EVENT_DATE	DATE/TIME of the FAD observation event	REFER TO APPENDIX A1		<FAD_EVENT_DATE>	Y
OBJECT_NUMBER	Number allocated for the object	SmallInt		<OBJECT_NUMBER>	Y
ORIGIN_CODE	Original CODE of the FAD	REFER TO APPENDIX A24	Code 5 or 6 used for FADs with radio buoy attached	<ORIGIN_CODE>	Y
DEPLOYMENT_DATE	Date of FAD deployment	REFER TO APPENDIX A1		<DEPLOYMENT_DATE>	Y
LAT	LAT postion of deployment	REFER TO APPENDIX A2		<LAT>	Y
LON	LON postion of deployment	REFER TO APPENDIX A2		<LON>	Y
SSI_TRAPPED	FLAG to indicate whether any SSI are trapped on the FAD	Char (1)		<SSI_TRAPPED>	Y
AS_FOUND_CODE	CODE to indicate whether the FAD "as Found"	Int		<AS_FOUND_CODE>	Y
AS_LEFT_CODE	CODE to indicate whether the FAD "as Left"	Int		<AS_LEFT_CODE>	Y
MAX_DEPTH_M	Max DEPTH of the FAD in metres	Decimal (5,1)		<MAX_DEPTH_M>	Y
LENGTH_M	Max LENGTH of the FAD in metres	Decimal (5,1)		<LENGTH_M>	Y
WIDTH_M	Max WIDTH of the FAD in metres	Decimal (5,1)		<WIDTH_M>	Y
BUOY_NUMBER	Buoy number stated on the FAD	NVarChar (20)		<BUOY_NUMBER>	Y
MARKINGS	Markings on the FAD	NVarChar (50)		<MARKINGS>	Y
COMMENTS	Comments made by the observer about the FAD	NText		<COMMENTS>	Y

1.19 FAD MATERIAL DETAIL

PS FAD MATERIAL DETAIL					
PROVIDE information on the FAD MATERIAL DETAIL observed during the trip.					
FIELD	Data Collection Instructions	Field format notes	Validation rules	XML TAG	WCPFC FIELD
TRIP IDENTIFIER	Internally generated. Can be NATURAL KEY or unique integer. NATURAL KEY would be VESSEL + DEPARTURE DATE			<OBSTRIP_ID>	Y
FAD EVENT IDENTIFIER	Internally generated. Can be NATURAL KEY or unique integer. NATURAL KEY would be VESSEL + DEPARTURE DATE + FAD EVENT DATE/TIME			<FAD_ID>	Y
MATERIAL_CODE	FAD Material CODE	REFER TO APPENDIX A26	Material Code must exist in the ref_ids table	<MATERIAL_CODE>	Y
IS_ATTACHMENT	FLAG to indicate if there is an attachment to the FAD	Char (1)	'Y' or 'N'	<IS_ATTACHMENT>	Y

1.20 OBSERVER POLLUTION REPORT

OBS_POLLUTION					
PROVIDE information any Pollution observed during the trip.					
FIELD	Data Collection Instructions	Field format notes	Validation rules	XML TAG	WCPFC FIELD
TRIP IDENTIFIER	Internally generated. Can be NATURAL KEY or unique integer. NATURAL KEY would be VESSEL + DEPARTURE DATE			<OBSTRIP_ID>	Y
POLLUTION EVENT IDENTIFIER	Internally generated. Can be NATURAL KEY or unique integer. NATURAL KEY would be VESSEL + DEPARTURE DATE + INCIDENT DATE/TIME			<POLL_ID>	Y
INC DATE	DATE & TIME of the incident	REFER TO APPENDIX A1		<INC_DTIME>	Y
LAT	Latitude where incident occurred	REFER TO APPENDIX A2		<LAT>	Y
LON	Longitude where incident occurred	REFER TO APPENDIX A2		<LON>	Y
PORT ID	PORT where incident occurred	REFER TO APPENDIX A3		<PORT_ID>	N
ACTIV ID	Activity when event occurred	REFER TO APPENDIX A5		<ACTIV_ID>	N
VESSEL IDENTIFIER			REFER TO APPENDIX A4		
VATYP ID	Vessel / Aircraft type	Int	REFER TO APPENDIX 17	<VATYP_ID>	N
BEARING_DIR	Compass Bearing to offending vessel	SmallInt		<BEARING_DIR>	N
DISTANCE	Distance to offending vessel	Decimal (7,3)		<DISTANCE>	N
COMMENTS	Additional comments	NText		<COMMENTS>	N
STICKERS_ANS	Response to "Stickers" question	Char (1)	'Y' or 'N'	<STICKERS_ANS>	N
AWARE_ANS	Response to "MARPOL" question	Char (1)	'Y' or 'N'	<AWARE_ANS>	N
ADVISED_ANS	Response to "INFRINGEMENTS" question	Char (1)	'Y' or 'N'	<ADVISED_ANS>	N
PHOTOS_ANS	Response to "PHOTOS" question	Char (1)	'Y' or 'N'	<PHOTOS_ANS>	N
PHOTO_NUMBERS	Number of photos taken on the incident	NVarChar (50)		<PHOTO_NUMBERS>	N

1.21 OBSERVER POLLUTION DETAILS

OBS_POLLUTION_DETAILS					
PROVIDE information any Pollution details observed during the trip.					
FIELD	Data Collection Instructions	Field format notes	Validation rules	XML TAG	WCFPC FIELD
TRIP IDENTIFIER	Internally generated. Can be NATURAL KEY or unique integer. NATURAL KEY would be VESSEL + DEPARTURE DATE			<OBSTRIP_ID>	Y
POLLUTION EVENT IDENTIFIER	Internally generated. Can be NATURAL KEY or unique integer. NATURAL KEY would be VESSEL + DEPARTURE DATE + INCIDENT DATE/TIME			<POLL_ID>	Y
POLLUTIONTYPE_ID	Pollution type code	REFER TO APPENDIX A31	For example, Disposal of OFFAL MANAGEMENT is a WCFPC required field.	<POLLUTIONTYPE_ID>	Y
MATERIAL_ID	Pollution Materials code	REFER TO APPENDIX A29		<MATERIAL_ID>	
POLL_GEAR_ID	Pollution Gear code	REFER TO APPENDIX A28		<POLL_GEAR_ID>	
POLL_SRC_ID	Pollution Source code	REFER TO APPENDIX A30	For example, Disposal of OFFAL MANAGEMENT is a WCFPC required field.	<POLL_SRC_ID>	Y
POLL_DESC	Description of pollution type	NText	For example, Disposal of OFFAL MANAGEMENT is a WCFPC required field.	<POLL_DESC>	Y
POLL_QTY	Description of pollution quantity	NText	For example, Disposal of OFFAL MANAGEMENT is a WCFPC required field.	<POLL_QTY>	Y

1.22 OBSERVER JOURNAL

OBS_JOURNAL					
PROVIDE a description of the day's activities in a daily journal record for the trip.					
FIELD	Data Collection Instructions	Field format notes	Validation rules	XML TAG	WCFPC FIELD
TRIP IDENTIFIER	Internally generated. Can be NATURAL KEY or unique integer. NATURAL KEY would be VESSEL + DEPARTURE DATE			<OBSTRIP_ID>	N
DAILY JOURNAL IDENTIFIER	Internally generated. Can be NATURAL KEY or unique integer. NATURAL KEY would be VESSEL + DEPARTURE DATE			<OBS_JRNL_ID>	N
JRNL_DATE	DATE of Journal entry	REFER TO APPENDIX A1		<JRNL_DATE>	N
JRNL_TEXT	Daily journal entry	NText		<JRNL_TEXT>	N

1.23 PURSE SEINE TRIP REPORT

PS_TRIP_REPORT					
PROVIDE descriptive information on the trip.					
Refer to the relevant sections in http://www.spc.int/OceanFish/en/publications/doc_download/1334-2014-ps-trip-report-					
FIELD	Data Collection Instructions	Field format notes	Validation rules	XML TAG	WCPFC FIELD
TRIP IDENTIFIER	Internally generated. Can be NATURAL KEY or unique integer. NATURAL KEY would be VESSEL + DEPARTURE DATE			<OBSTRIP_ID>	N
1_BACKGROUND	(Refer to relevant section in link above)	NText		<1_BACKGROUND>	N
2_0_CRUISE_SUMMARY	(Refer to relevant section in link above)	NText		<2_0_CRUISE_SUMMARY>	N
2_1_AREA_FISHED	(Refer to relevant section in link above)	NText		<2_1_AREA_FISHED>	N
2_2_END_OF_TRIP	(Refer to relevant section in link above)	NText		<2_2_END_OF_TRIP>	N
3_0_DATA_COLLECTED	(Refer to relevant section in link above)	NText		<3_0_DATA_COLLECTED>	N
4_0_VESSEL_CREW	(Refer to relevant section in link above)	NText		<4_0_VESSEL_CREW>	N
4_1_VESS_INFO	(Refer to relevant section in link above)	NText		<4_1_VESS_INFO>	N
4_2_CREW_NATION	(Refer to relevant section in link above)	NText		<4_2_CREW_NATION>	N
4_2_1_PIC	(Refer to relevant section in link above)	NText		<4_2_1_PIC>	N
4_3_FISHING_GEAR	(Refer to relevant section in link above)	NText		<4_3_FISHING_GEAR>	N
4_3_1_BRAIL	(Refer to relevant section in link above)	NText		<4_3_1_BRAIL>	N
4_3_2_NET	(Refer to relevant section in link above)	NText		<4_3_2_NET>	N
4_4_ELEC	(Refer to relevant section in link above)	NText		<4_4_ELEC>	N
4_5_SAFETY_EQ	(Refer to relevant section in link above)	NText		<4_5_SAFETY_EQ>	N
4_6_OTHER_GEAR	(Refer to relevant section in link above)	NText		<4_6_OTHER_GEAR>	N
5_0_FISH_STRATEGY	(Refer to relevant section in link above)	NText		<5_0_FISH_STRATEGY>	N
5_1_FLOAT_SCHS	(Refer to relevant section in link above)	NText		<5_1_FLOAT_SCHS>	N
5_2_FREE_SCHS	(Refer to relevant section in link above)	NText		<5_2_FREE_SCHS>	N
5_3_SET_TECH	(Refer to relevant section in link above)	NText		<5_3_SET_TECH>	N
5_4_VESS_ADV	(Refer to relevant section in link above)	NText		<5_4_VESS_ADV>	N
5_5_HELICOPTER	(Refer to relevant section in link above)	NText		<5_5_HELICOPTER>	N
5_6_FISH_SUCC	(Refer to relevant section in link above)	NText		<5_6_FISH_SUCC>	N
5_7_FISH_INFO	(Refer to relevant section in link above)	NText		<5_7_FISH_INFO>	N
6_0_COC	(Refer to relevant section in link above)	NText		<6_0_COC>	N
7_0_ENVIRON	(Refer to relevant section in link above)	NText		<7_0_ENVIRON>	N
8_1_TARGET_RET	(Refer to relevant section in link above)	NText		<8_1_TARGET_RET>	N
8_2_TARGET_DISC	(Refer to relevant section in link above)	NText		<8_2_TARGET_DISC>	N
8_3_TARGET_LOG	(Refer to relevant section in link above)	NText		<8_3_TARGET_LOG>	N
8_4_BYCATCH	(Refer to relevant section in link above)	NText		<8_4_BYCATCH>	N
8_4_1_BYC_LOG_COMP	(Refer to relevant section in link above)	NText		<8_4_1_BYC_LOG_COMP>	N
8_4_2_BILL	(Refer to relevant section in link above)	NText		<8_4_2_BILL>	N
8_4_3_SHARKS_RAYS	(Refer to relevant section in link above)	NText		<8_4_3_SHARKS_RAYS>	N
8_4_4_OTHER_BY-CATCH	(Refer to relevant section in link above)	NText		<8_4_4_OTHER_BY-CATCH>	N
8_4_5_UNSPEC_SP_CODES	(Refer to relevant section in link above)	NText		<8_4_5_UNSPEC_SP_CODES>	N
8_4_6_SSI_LAND	(Refer to relevant section in link above)	NText		<8_4_6_SSI_LAND>	N
8_4_7_SSI_INTERACT	(Refer to relevant section in link above)	NText		<8_4_7_SSI_INTERACT>	N
8_4_8_SSI_SIGHT	(Refer to relevant section in link above)	NText		<8_4_8_SSI_SIGHT>	N
9_0_SAMPLING	(Refer to relevant section in link above)	NText		<9_0_SAMPLING>	N
9_1_GRAB	(Refer to relevant section in link above)	NText		<9_1_GRAB>	N

PS_TRIP_REPORT

PROVIDE descriptive information on the trip.

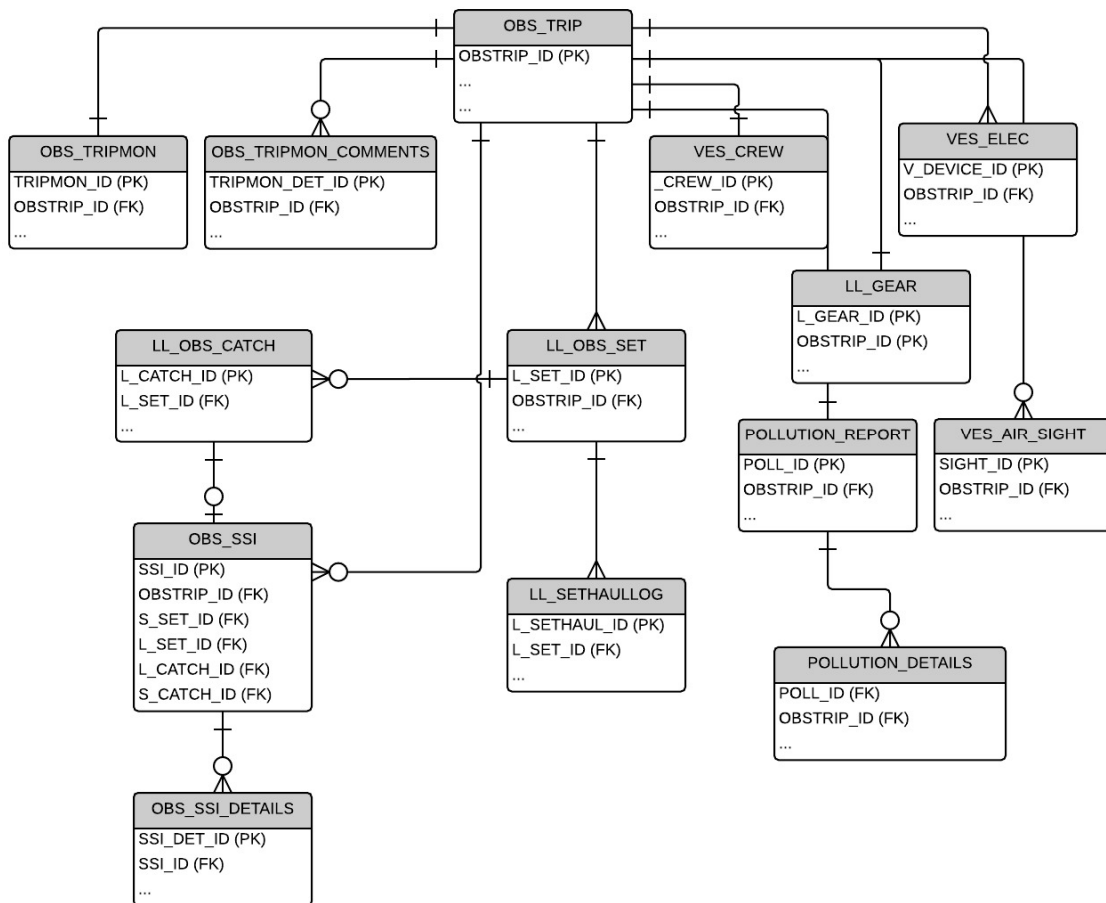
Refer to the relevant sections in http://www.spc.int/OceanFish/en/publications/doc_download/1334-2014-ps-trip-report-

FIELD	Data Collection Instructions	Field format notes	Validation rules	XML TAG	WCPFC FIELD
9 2 SPILL	Refer to relevant section in link above)	NText		<9 2 SPILL>	N
9 3 OTHER	Refer to relevant section in link above)	NText		<9 3 OTHER>	N
10 0 OTHER PROJ	Refer to relevant section in link above)	NText		<10 0 OTHER PROJ>	N
11 0 WELL LOAD	Refer to relevant section in link above)	NText		<11 0 WELL LOAD>	N
12 0 VESS DATA	Refer to relevant section in link above)	NText		<12 0 VESS DATA>	N
13 0 GENERAL	Refer to relevant section in link above)	NText		<13 0 GENERAL>	N
14 0 TRIP MON	Refer to relevant section in link above)	NText		<14 0 TRIP MON>	N
14 1 CLARIFY	Refer to relevant section in link above)	NText		<14 1 CLARIFY>	N
14 2 RECOMMEND	Refer to relevant section in link above)	NText		<14 2 RECOMMEND>	N
14 3 CREW INFO	Refer to relevant section in link above)	NText		<14 3 CREW INFO>	N
14 4 MEDICAL	Refer to relevant section in link above)	NText		<14 4 MEDICAL>	N
14 5 PHOTOS	Refer to relevant section in link above)	NText		<14 5 PHOTOS>	N
14 6 OTHER INFO	Refer to relevant section in link above)	NText		<14 6 OTHER INFO>	N
15 0 PROBS	Refer to relevant section in link above)	NText		<15 0 PROBS>	N
15 1 FORM CH RECS	Refer to relevant section in link above)	NText		<15 1 FORM CH RECS>	N
16 0 CONCL	Refer to relevant section in link above)	NText		<16 0 CONCL>	N
17 0 ACKS	Refer to relevant section in link above)	NText		<17 0 ACKS>	N

2. LONGLINE OBSERVER E-REPORTING STANDARDS

2.1 DATA MODEL DIAGRAM

The following basic data model diagram outlines the structure of the entities and their relationships for purse seine operational OBSERVER data collected by E-Reporting systems and submitted to national and regional fisheries authorities. The tables that follow provide more information on the mechanisms of the links (relationships) between the entities.



2.2 TRIP-LEVEL DATA

(see the common OBS_TRIP table under [1.2 TRIP-LEVEL DATA](#))

DRAFT

2.3 SET-LEVEL DATA

LL_OBS_SET					
The observer must PROVIDE the following information for EACH FISHING SET/HAUL during the trip.					
FIELD	Data Collection Instructions	Field format notes	Validation rules	XML TAG	WCPFC FIELD
TRIP IDENTIFIER	Internally generated. Can be NATURAL KEY or unique integer. NATURAL KEY would be VESSEL + DEPARTURE DATE			<OBSTRIP_ID>	Y
SET IDENTIFIER	Internally generated. Can be NATURAL KEY or unique integer. NATURAL KEY would be VESSEL + DEPARTURE DATE + SET START DATE + SET START TIME			<L_SET_ID>	Y
SET_NUMBER	Unique # for the SET in this trip	Int		<SET_NUMBER>	N
OBSERVED_YN	Flag to indicate whether set was observed or not.	Bit		<OBSERVED_YN>	N
SET_DATE	Start Date/time for set.	REFER TO APPENDIX A1		<SET_DATE>	Y
HK_BT_FLT	Number of hooks between floats	SmallInt	Must be 1-60, or -1 for no information.	<HK_BT_FLT>	Y
BASK_SET	Number of baskets set.	SmallInt		<BASK_SET>	Y
BASK_OBSERVED	Number of basket observed (bottom of form, Nov 07 version)	SmallInt		<BASK_OBSERVED>	Y
HOOK_SET	Total number of hooks set.	SmallInt		<HOOK_SET>	Y
HOOK_OBSERVED	Number of hooks observed and data recorded.	SmallInt		<HOOK_OBSERVED>	Y
FLOAT_LENGTH	Length of floatline (m)	SmallInt		<FLOAT_LENGTH>	Y
LSPEED	Line setting speed.	Decimal (5,1)		<LSPEED>	Y
LSPEED_UNIT_ID	Link to ref ids table	CHAR(1)	Must be 'M' for metres/second or 'K' for knots	<LSPEED_UNIT_ID>	Y
BRANCH_INTVL	Time interval (secs.) between branchline sets.	SmallInt		<BRANCH_INTVL>	Y
BRANCH_DIST	Mainline distance between branchlines (m).	Decimal (4,1)		<BRANCH_DIST>	Y
VESSEL_SET_SPEED	Vessel setting Speed (Knots).	Decimal (5,1)		<VESSEL_SET_SPEED>	N
LIGHTSTICKS	Number of lightsticks used	SmallInt		<LIGHTSTICKS>	Y
TDRS	Number of Time Depth recorders used	SmallInt		<TDRS>	Y
BRANCH_LENGTH	Length of branchline (m) (If all are of a consistent length, otherwise use next set of fields).	Decimal (4,1)		<BRANCH_LENGTH>	Y
BRANCH_0_20	Number of branchlines between successive floats that are < 20 m.	SmallInt		<BRANCH_0_20>	Y
BRANCH_20_34	Number of branchlines between successive floats that are 20-35 m.	SmallInt		<BRANCH_20_34>	Y
BRANCH_35_50	Number of branchlines between successive floats that are 35-50 m.	SmallInt		<BRANCH_35_50>	Y
BRANCH_50_99	Number of branchlines between successive floats that are > 50 m.	SmallInt		<BRANCH_50_99>	Y
FLOAT_HOOK_N	The total number of hooks that have been hung directly from the floatline for this set.	SmallInt		<FLOAT_HOOK_N>	Y
TAR_SP_CODE	Target Species id recorded on the form	Char (3)	REFER TO APPENDIX 8.	<TAR_SP_CODE>	Y

LL_OBS_SET

The observer must PROVIDE the following information for EACH FISHING SET/HAUL during the trip.

FIELD	Data Collection Instructions	Field format notes	Validation rules	XML TAG	WCPFC FIELD
	for this set (refer to the SPECIES table)				
TARGET_TUN_YN	ADDITIONAL FLAG indication for MULTIPLE targeting	Bit		<TARGET_TUN_YN>	Y
TARGET_SWO_YN	ADDITIONAL FLAG indication for MULTIPLE targeting	Bit		<TARGET_SWO_YN>	Y
TARGET_SKH_YN	ADDITIONAL FLAG indication for MULTIPLE targeting	Bit		<TARGET_SKH_YN>	Y
SETDETAILS	General notes on the setting procedures. Any comments relating to the setting strategy. For example has there been any specific targetting of shark in this set.	NText		<SETDETAILS>	N
BAIT1_SP_CODE	Bait species id. # 1	Char (3)	REFER TO APPENDIX 8.	<BAIT1_SP_CODE>	Y
BAIT2_SP_CODE	Bait species id. # 2	Char (3)	REFER TO APPENDIX 8.	<BAIT2_SP_CODE>	Y
BAIT3_SP_CODE	Bait species id. # 3	Char (3)	REFER TO APPENDIX 8.	<BAIT3_SP_CODE>	Y
BAIT4_SP_CODE	Bait species id. # 4	Char (3)	REFER TO APPENDIX 8.	<BAIT4_SP_CODE>	Y
BAIT5_SP_CODE	Bait species id. # 5	Char (3)	REFER TO APPENDIX 8.	<BAIT5_SP_CODE>	Y
BAIT1_W	Weight of bait species #1 used, (kg)	SmallInt		<BAIT1_W>	N
BAIT2_W	Weight of bait species #2 used, (kg)	SmallInt		<BAIT2_W>	N
BAIT3_W	Weight of bait species #3 used, (kg)	SmallInt		<BAIT3_W>	N
BAIT4_W	Weight of bait species #4 used, (kg)	SmallInt		<BAIT4_W>	N
BAIT5_W	Weight of bait species #5 used, (kg)	SmallInt		<BAIT5_W>	N
BAIT1_H	Hook number(s) in basket that Bait 1 was placed	NVarChar (25)	(Hook numbers separated by commas)	<BAIT1_H>	N
BAIT2_H	Hook number(s) in basket that Bait 2 was placed	NVarChar (25)	(Hook numbers separated by commas)	<BAIT2_H>	N
BAIT3_H	Hook number(s) in basket that Bait 3 was placed	NVarChar (25)	(Hook numbers separated by commas)	<BAIT3_H>	N
BAIT4_H	Hook number(s) in basket that Bait 4 was placed	NVarChar (25)	(Hook numbers separated by commas)	<BAIT4_H>	N
BAIT5_H	Hook number(s) in basket that Bait 5 was placed	NVarChar (25)	(Hook numbers separated by commas)	<BAIT5_H>	N
BAIT1_DYED_YN	FLAG indication on dyed on bait #1	SmallInt		<BAIT1_DYED_YN>	Y
BAIT2_DYED_YN	FLAG indication on dyed on bait #2	SmallInt		<BAIT2_DYED_YN>	Y
BAIT3_DYED_YN	FLAG indication on dyed on bait #3	SmallInt		<BAIT3_DYED_YN>	Y
BAIT4_DYED_YN	FLAG indication on dyed on bait #4	SmallInt		<BAIT4_DYED_YN>	Y
BAIT5_DYED_YN	FLAG indication on dyed on bait #5	SmallInt		<BAIT5_DYED_YN>	Y
TORI_POLES_YN	FLAG indication on tori poles used	SmallInt		<TORI_POLES_YN>	Y
BIRD_CURTAIN_YN	FLAG indication on bird curtain used	SmallInt		<BIRD_CURTAIN_YN>	Y
WT_LINES_YN	FLAG indication on weighted lines used	SmallInt		<WT_LINES_YN>	Y
UW_CHUTE_YN	FLAG indication on underwater chute used	SmallInt		<UW_CHUTE_YN>	Y

2.4 SET-HAUL LOG DATA

LL_SETHAULLOG

The E-Reporting system must PROVIDE the following log information for EACH SET/HAUL during the period of the trip, typically on a 30-minute basis.

FIELD	Data Collection Instructions	Field format notes	Validation rules	XML TAG	WCPFC FIELD
TRIP IDENTIFIER	Internally generated. Can be NATURAL KEY or unique integer. NATURAL KEY would be VESSEL + DEPARTURE DATE			<OBSTRIP_ID>	Y
SET IDENTIFIER	Internally generated. Can be NATURAL KEY or unique integer. NATURAL KEY would be VESSEL + DEPARTURE DATE + SET START DATE + SET START TIME			<L_SET_ID>	Y
SETHAUL LOG IDENTIFIER	Internally generated. Can be NATURAL KEY or unique integer. NATURAL KEY would be VESSEL + DEPARTURE DATE + SET START DATE + SET START TIME + LOG DATE + LOG TIME			<L_SETHAULOG_ID>	Y
LOG_DATE	Date/TIME of log reading	REFER TO APPENDIX A1		<LOG_DATE>	Y
SETHAUL	Status of gear at this logged date/time : Set (S) Haul (H) or Soak (K)	Char (4)	Must be either 'S', 'H', 'K'	<SETHAUL>	Y
STEND_ID	Indicator for status of the SET-HAUL 83 - First log record for the SET (start of SET information) 84 - Last log record for the SET (end of SET information) 85 - First log record for the HAUL (start of HAUL information) 86 - Last log record for the HAUL (end of HAUL information)	Int	Must be 83, 84, 85, 86 or NULL	<STEND_ID>	Y
LAT	Latitude (long format)	REFER TO APPENDIX A2		<LAT>	Y
LON	Longitude (long format)	REFER TO APPENDIX A2		<LON>	Y
COMMENTS	Comments	NText		<COMMENTS>	N

2.5 SET CATCH DATA

LL_OBS_CATCH					
The observer must PROVIDE the following CATCH DETAILS for EACH FISHING HAUL for the period of the trip.					
FIELD	Data Collection Instructions	Field format notes	Validation rules	XML TAG	WCPFC FIELD
TRIP IDENTIFIER	Internally generated. Can be NATURAL KEY or unique integer. NATURAL KEY would be VESSEL + DEPARTURE DATE			<OBSTRIP_ID>	Y
SET IDENTIFIER	Internally generated. Can be NATURAL KEY or unique integer. NATURAL KEY would be VESSEL + DEPARTURE DATE + SET START DATE + SET START TIME			<L_SET_ID>	Y
CATCH IDENTIFIER	Internally generated. Can be NATURAL KEY or unique integer. NATURAL KEY would be VESSEL + DEPARTURE DATE + SET START DATE + SET START TIME + CATCH EVENT DATE + CATCH EVENT TIME			<L_CATCH_ID>	Y
CATCH_DATE	Date/TIME of individual catch event	REFER TO APPENDIX A1		<CATCH_DATE>	Y
HOOK_NO	Hook number (since the last float). Hook number=99 represents catch on a hook hanging directly from the floatline.	SmallInt		<HOOK_NO>	Y
SP_CODE	Species code.	Char (3)	REFER TO APPENDIX 8. Only shark species can have a FATE as 'RFR' and 'DFR'.	<SP_CODE>	Y
FATE_CODE	FATE of this catch. This indicates whether it was RETAINED, DISCARDED or ESCAPED, and any specific processing.	Char (3)	REFER TO APPENDIX 9 Only shark species can have a FATE as 'RFR' and 'DFR'.	<FATE_CODE>	Y
COND_CODE	CONDITION of this catch on LANDING. Relevant for the Species of Special Interest.	Char (2)	REFER TO APPENDIX 10	<COND_CODE>	Y
COND_REL_CODE	CONDITION of this catch on RELEASE/DISCARD. Relevant for the Species of Special Interest.	Char (2)	REFER TO APPENDIX 10		Y
LEN	Length (cm).	SmallInt	Refer to SPECIES RANGE table for these species	<LEN>	Y
LEN_CODE	Length measurement code	Char (2)	REFER TO APPENDIX 11	<LEN_CODE>	Y
WT	Weight (kgs) - must be measured weight and not a visual estimate	Decimal (5,1)		<WT>	N
WT_CODE	Weight code.	Char (2)	REFER TO APPENDIX 22	<WT_CODE>	N
SEX_CODE	SEX of fish	Char (1)	REFER TO APPENDEX 12	<SEX_CODE>	Y
GSTAGE_CODE	GONAD STAGE CODE	Char (1)	REFER TO APPENDIX 23	<GSTAGE_CODE>	N
COMMENTS	Comments	NVarChar (40)		<COMMENTS>	N

2.6 SPECIES OF SPECIAL INTEREST DATA

(see [1.7 SPECIES OF SPECIAL INTEREST DATA](#))

2.7 SPECIES OF SPECIAL INTEREST DETAILS DATA

(see [1.8 SPECIES OF SPECIAL INTEREST DETAIL DATA](#))

2.8 TRIP MONITORING QUESTIONS

(see [1.11 TRIP MONITORING DATA](#))

2.9 TRIP MONITORING COMMENTS

(see [1.12 TRIP MONITORING COMMENTS](#))

2.10 VESSEL/AIRCRAFT SIGHTINGS DATA

(see [1.13 VESSEL/AIRCRAFT SIGHTINGS](#))

2.11 MARINE DEVICES DATA

(see [1.15 MARINE DEVICES DATA](#))

DRAFT

2.12 CREW DATA

VES_CREW					
PROVIDE the summary details of VESSEL CREW by NATIONALITY on this TRIP.					
FIELD	Data Collection Instructions	Field format notes	Validation rules	XML TAG	WCPFC FIELD
TRIP IDENTIFIER	Internally generated. Can be NATURAL KEY or unique integer. NATURAL KEY would be VESSEL + DEPARTURE DATE			<OBSTRIP_ID>	Y
CREW IDENTIFIER	Internally generated. Can be NATURAL KEY or unique integer. NATURAL KEY would be VESSEL + DEPARTURE DATE + COUNTRY_CODE			<V_CREW_ID>	Y
COUNTRY_CODE	Nationality of the CREW	Char (2)	Refer to valid ISO two-letter Country Codes - ISO 3166 For example, refer to http://en.wikipedia.org/wiki/ISO 3166-1	<COUNTRY_CODE>	Y
CREWCOUNT	Total number of crew on board during the trip for this COUNTRY OF NATIONALITY	SmallInt		<CREWCOUNT>	Y

2.13 LONGLINE GEAR DATA

LL GEAR					
PROVIDE information on the LONGLINE GEAR on the vessel.					
FIELD	Data Collection Instructions	Field format notes	Validation rules	XML TAG	WCPFC FIELD
TRIP IDENTIFIER	Internally generated. Can be NATURAL KEY or unique integer. NATURAL KEY would be VESSEL + DEPARTURE DATE			<OBSTRIP_ID>	Y
LL GEAR IDENTIFIER	Internally generated. Can be NATURAL KEY or unique integer. NATURAL KEY would be VESSEL + DEPARTURE DATE			<L_GEAR_ID>	Y
MLINEHAUL_ANS	Mainline hauler (Y/N)	Char (1)	Must be 'Y', 'N' or 'X' (observer did not respond to this question)	<MLINEHAUL_ANS>	Y
MLINEHAUL_USAGE_CODE	Link to ref usage table	Char (3)	REFER TO APPENDIX 21	<MLINEHAUL_USAGE_CODE>	Y
MLINEHAUL_COMMENTS	Comments on Mainline Hauler	NVarChar (50)		<MLINEHAUL_COMMENTS>	N
BLINEHAUL_ANS	Branchline hauler (Y/N)	Char (1)	Must be 'Y', 'N' or 'X' (observer did not respond to this question)	<BLINEHAUL_ANS>	Y
BLINEHAUL_USAGE_CODE	Link to ref usage table	Char (3)	REFER TO APPENDIX 21	<BLINEHAUL_USAGE_CODE>	Y
BLINEHAUL_COMMENTS	Comments on Branchline Hauler	NVarChar (50)		<BLINEHAUL_COMMENTS>	N
LSHOOT_ANS	Line shooter (Y/N)	Char (1)	Must be 'Y', 'N' or 'X' (observer did not respond to this question)	<LSHOOT_ANS>	Y
LSHOOT_USAGE_CODE	Link to ref usage table	Char (3)	REFER TO APPENDIX 21	<LSHOOT_USAGE_CODE>	Y
LSHOOT_COMMENTS	Comments on Line shooter	NVarChar (50)		<LSHOOT_COMMENTS>	N
BAITTHR_ANS	Automatic bait thrower (Y/N)	Char (1)	Must be 'Y', 'N' or 'X' (observer did not respond to this question)	<BAITTHR_ANS>	Y
BAITTHR_USAGE_CODE	Link to ref usage table	Char (3)	REFER TO APPENDIX 21	<BAITTHR_USAGE_CODE>	Y
BAITTHR_COMMENTS	Comments on Automatic Bait thrower	NVarChar (50)		<BAITTHR_COMMENTS>	N
BRANCHATT_ANS	Automatic branchline attacher (Y/N)	Char (1)	Must be 'Y', 'N' or 'X' (observer did not respond to this question)	<BRANCHATT_ANS>	Y
BRANCHATT_USAGE_CODE	Link to ref usage table	Char (3)	REFER TO APPENDIX 21	<BRANCHATT_USAGE_CODE>	Y
BRANCHATT_COMMENTS	Comments on Automatic Branchline attacher	NVarChar (50)		<BRANCHATT_COMMENTS>	N
WT_SCA_ANS	Weighing scales (Y/N)	Char (1)	Must be 'Y', 'N' or 'X' (observer did not respond to this question)	<WT_SCA_ANS>	N
WT_SCA_USAGE_CODE	Weighing scales USAGE	Char (3)	REFER TO APPENDIX 21	<WT_SCA_USAGE_CODE>	N
WT_SCA_COMMENTS	Comments on Automatic B Weighing scales	NVarChar (50)		<WT_SCA_COMMENTS>	N
MLINE_COMP	Composition of mainline	NText		<MLINE_COMP>	Y
BLINE_COMP	Composition of branchlines	NText		<BLINE_COMP>	Y
MLINE_MAT	Mainline material	NVarChar (15)		<MLINE_MAT>	Y
MLINE_MAT_DESC	Mainline material description	NVarChar (50)		<MLINE_MAT_DESC>	Y
MLINE_LEN	Mainline length (nm)	Decimal (5,1)		<MLINE_LEN>	Y
MLINE_DIAM	Mainline diameter (mm)	Decimal (4,1)		<MLINE_DIAM>	Y
BLINE_MAT1	Composition of branchlines (Material #1)	NVarChar (40)		<BLINE_MAT1>	Y
BLINE_MAT1_DESC	Branchlines (Material #1)	NVarChar (50)		<BLINE_MAT1_DESC>	Y

LL_GEAR

PROVIDE information on the LONGLINE GEAR on the vessel.

FIELD	Data Collection Instructions	Field format notes	Validation rules	XML TAG	WCPFC FIELD
	description				
BLINE_MAT2	Composition of branchlines (Material #2)	NVarChar (40)		<BLINE_MAT2>	Y
BLINE_MAT2_DESC	Branchlines (Material #2) description	NVarChar (50)		<BLINE_MAT2_DESC>	Y
BLINE_MAT3	Composition of branchlines (Material #3)	NVarChar (40)		<BLINE_MAT3>	Y
BLINE_MAT3_DESC	Branchlines (Material #3) description	NVarChar (50)		<BLINE_MAT3_DESC>	Y
WIRETRACE_ANS	Presence orf wire trace (Y/N)	Char (1)	Must be 'Y', 'N' or 'X' (observer did not respond to this question)	<WIRETRACE_ANS>	Y
SEAWATER_ANS	Refrigeration method - Sea water ?	Char (1)	Must be 'Y', 'N' or 'X' (observer did not respond to this question)	<SEAWATER_ANS>	Y
BLASTFREEZER_ANS	Refrigeration method - blast freezer ?	Char (1)	Must be 'Y', 'N' or 'X' (observer did not respond to this question)	<BLASTFREEZER_ANS>	Y
ICE_ANS	Refrigeration method - Ice ?	Char (1)	Must be 'Y', 'N' or 'X' (observer did not respond to this question)	<ICE_ANS>	Y
CHILLEDSEAWATER_ANS	Refrigeration method - Chilled Sea water ?	Char (1)	Must be 'Y', 'N' or 'X' (observer did not respond to this question)	<CHILLEDSEAWATER_ANS>	Y
OTHERSTORAGE_ANS	Refrigeration method - other ?	Char (1)	Must be 'Y', 'N' or 'X' (observer did not respond to this question)	<OTHERSTORAGE_ANS>	Y
OTHERSTORAGE_DESC	Refrigeration method - other description	NVarChar (50)		<OTHERSTORAGE_DESC>	Y
HKSJAPAN_SIZE	Japanese hook size	NVarChar (50)		<HKSJAPAN_SIZE>	Y
HKSJAPAN_PERC	% of Japanese hook	TinyInt		<HKSJAPAN_PERC>	N
HKSJAPAN_ORIS	Japanese hook original size	NVarChar (5)		<HKSJAPAN_ORIS>	Y
HKSCIRCLE_SIZE	Circle hook size	NVarChar (50)		<HKSCIRCLE_SIZE>	Y
HKSCIRCLE_PERC	% of Circle hook	TinyInt		<HKSCIRCLE_PERC>	N
HKSCIRCLE_ORIS	Circle hook original size	NVarChar (5)		<HKSCIRCLE_ORIS>	Y
HKSJ_SIZE	J hook size	NVarChar (50)		<HKSJ_SIZE>	Y
HKSJ_PERC	% of J hook size	TinyInt		<HKSJ_PERC>	N
HKSJ_ORIS	J hook original size	NVarChar (5)		<HKSJ_ORIS>	Y
HKSOTH_TYPE	Other hook types description	NVarChar (50)		<HKSOTH_TYPE>	Y
HKSOTH_SIZE	Other hook type size	NVarChar (50)		<HKSOTH_SIZE>	Y
HKSOTH_PERC	% of Other hook types	TinyInt		<HKSOTH_PERC>	N
HKSOTH_ORIS	Others types of hook original size	NVarChar (5)		<HKSOTH_ORIS>	Y
BLINE_MAT1_DIAM	Branchlines (Material #1) diameter	Decimal (4,1)		<BLINE_MAT1_DIAM>	Y
BLINE_MAT2_DIAM	Branchlines (Material #2) diameter	Decimal (4,1)		<BLINE_MAT2_DIAM>	Y

2.14 POLLUTION REPORT

(see [1.20 POLLUTION REPORT](#) and [1.21 POLLUTION DETAILS](#))

2.15 OBSERVER JOURNAL

(see [1.22 OBSERVER JOURNAL](#))

DRAFT

2.16 LONGLINE TRIP REPORT

LL TRIP REPORT					
PROVIDE descriptive information on the trip.					
Refer to the relevant sections in http://www.spc.int/OceanFish/en/publications/doc_download/1318-2014-11-trip-report					
FIELD	Data Collection Instructions	Field format notes	Validation rules	XML TAG	WCPFC FIELD
TRIP IDENTIFIER	Internally generated. Can be NATURAL KEY or unique integer. NATURAL KEY would be VESSEL + DEPARTURE DATE			<OBSTRIP_ID>	N
1_BACKGROUND	(Refer to relevant section in link above)	NText		<1_BACKGROUND>	N
2_0_CRUISE_SUMMARY	(Refer to relevant section in link above)	NText		<2_0_CRUISE_SUMMARY>	N
2_1_AREA_FISHED	(Refer to relevant section in link above)	NText		<2_1_AREA_FISHED>	N
2_2_END_OF_TRIP	(Refer to relevant section in link above)	NText		<2_2_END_OF_TRIP>	N
3_0_DATA_COLLECTED	(Refer to relevant section in link above)	NText		<3_0_DATA_COLLECTED>	N
3_1_OTHER_DATA_COLL	(Refer to relevant section in link above)	NText		<3_1_OTHER_DATA_COLL>	N
4_0_COC	Refer to relevant section in link above)	NText		<4_0_COC>	N
5_1_VESS_INFO	Refer to relevant section in link above)	NText		<5_1_VESS_INFO>	N
5_2_CREW_NATION	Refer to relevant section in link above)	NText		<5_2_CREW_NATION>	N
5_2_1_PIC	Refer to relevant section in link above)	NText		<5_2_1_PIC>	N
5_3_ELEC	Refer to relevant section in link above)	NText		<5_3_ELEC>	N
5_3_1_RADIO_BUOYS	Refer to relevant section in link above)	NText		<5_3_1_RADIO_BUOYS>	N
5_4_FISHING_GEAR	Refer to relevant section in link above)	NText		<5_4_FISHING_GEAR>	N
5_4_1_MAINLINE	Refer to relevant section in link above)	NText		<5_4_1_MAINLINE>	N
5_4_2_BRANCHLINES	Refer to relevant section in link above)	NText		<5_4_2_BRANCHLINES>	N
5_4_3_FLOATLINES	Refer to relevant section in link above)	NText		<5_4_3_FLOATLINES>	N
5_4_4_BLINE_WTS	Refer to relevant section in link above)	NText		<5_4_4_BLINE_WTS>	N
5_4_5_FISH_HOOKS	Refer to relevant section in link above)	NText		<5_4_5_FISH_HOOKS>	N
5_5_SAFETY_EQ	Refer to relevant section in link above)	NText		<5_5_SAFETY_EQ>	N
5_6_REGRIG	Refer to relevant section in link above)	NText		<5_6_REGRIG>	N
5_7_OTHER_GEAR	Refer to relevant section in link above)	NText		<5_7_OTHER_GEAR>	N
6_0_FISH_STRATEGY	Refer to relevant section in link above)	NText		<6_0_FISH_STRATEGY>	N
6_1_FISHERY_INFO	Refer to relevant section in link above)	NText		<6_1_FISHERY_INFO>	N
6_2_OCEAN_FEATURES	Refer to relevant section in link above)	NText		<6_2_OCEAN_FEATURES>	N
6_3_SET_HAUL	Refer to relevant section in link above)	NText		<6_3_SET_HAUL>	N
6_4_TARGET_DEPTH	Refer to relevant section in link above)	NText		<6_4_TARGET_DEPTH>	N
6_5_BAITING	Refer to relevant section in link above)	NText		<6_5_BAITING>	N
6_6_MITIGATION	Refer to relevant section in link above)	NText		<6_6_MITIGATION>	N
6_6_1_FISH_OFFAL	Refer to relevant section in link above)	NText		<6_6_1_FISH_OFFAL>	N
6_7_HAUL_PROCESS	Refer to relevant section in link above)	NText		<6_7_HAUL_PROCESS>	N
6_8_UNUSUAL_SET	Refer to relevant section in link above)	NText		<6_8_UNUSUAL_SET>	N
6_9_CHANGES_SETS	Refer to relevant section in link above)	NText		<6_9_CHANGES_SETS>	N
7_1_WEATHER	Refer to relevant section in link above)	NText		<7_1_WEATHER>	N
7_2_SEA_COND	Refer to relevant section in link above)	NText		<7_2_SEA_COND>	N
7_3_MOON_PHASE	Refer to relevant section in link above)	NText		<7_3_MOON_PHASE>	N
8_1_TARGET_CATCH	Refer to relevant section in link above)	NText		<8_1_TARGET_CATCH>	N
8_1_1_TARGET_PROC	Refer to relevant section in link above)	NText		<8_1_1_TARGET_PROC>	N
8_1_2_TARGET_DISC	Refer to relevant section in link above)	NText		<8_1_2_TARGET_DISC>	N

LL_TRIP_REPORT

PROVIDE descriptive information on the trip.

Refer to the relevant sections in http://www.spc.int/OceanFish/en/publications/doc_download/1318-2014-11-trip-report

FIELD	Data Collection Instructions	Field format notes	Validation rules	XML TAG	WCPFC FIELD
8 1 3 TARGET DAMAGE	Refer to relevant section in link above)	NText		<8 1 3 TARGET DAMAGE>	N
8 2 1 OTHER TUN BILL	Refer to relevant section in link above)	NText		<8 2 1 OTHER TUN BILL>	N
8 2 2 SHARKS RAYS	Refer to relevant section in link above)	NText		<8 2 2 SHARKS RAYS>	N
8 2 3 OTHER BY-CATCH	Refer to relevant section in link above)	NText		<8 2 3 OTHER BY-CATCH>	N
8 3 UNSPEC SP CODES	Refer to relevant section in link above)	NText		<8 3 UNSPEC SP CODES>	N
8 4 1 SSI LAND	Refer to relevant section in link above)	NText		<8 4 1 SSI LAND>	N
8 4 2 SSI INTERACT	Refer to relevant section in link above)	NText		<8 4 2 SSI INTERACT>	N
8 4 3 SSI MAM	Refer to relevant section in link above)	NText		<8 4 3 SSI MAM>	N
8 4 4 SSI SIGHT	Refer to relevant section in link above)	NText		<8 4 4 SSI SIGHT>	N
9 0 TRANS	Refer to relevant section in link above)	NText		<9 0 TRANS>	N
10 1 TAGS	Refer to relevant section in link above)	NText		<10 1 TAGS>	N
10 2 STOMACH	Refer to relevant section in link above)	NText		<10 2 STOMACH>	N
10 3 OTHER	Refer to relevant section in link above)	NText		<10 3 OTHER>	N
11 0 TRIP MON	Refer to relevant section in link above)	NText		<11 0 TRIP MON>	N
11 1 CLARIFY	Refer to relevant section in link above)	NText		<11 1 CLARIFY>	N
11 2 RECOMMEND	Refer to relevant section in link above)	NText		<11 2 RECOMMEND>	N
11 3 CREW INFO	Refer to relevant section in link above)	NText		<11 3 CREW INFO>	N
11 4 MEDICAL	Refer to relevant section in link above)	NText		<11 4 MEDICAL>	N
11 5 PHOTOS	Refer to relevant section in link above)	NText		<11 5 PHOTOS>	N
11 6 OTHER INFO	Refer to relevant section in link above)	NText		<11 6 OTHER INFO>	N
12 0 VESS DATA	Refer to relevant section in link above)	NText		<12 0 VESS DATA>	N
13 0 GENERAL	Refer to relevant section in link above)	NText		<13 0 GENERAL>	N
14 0 PROBS	Refer to relevant section in link above)	NText		<14 0 PROBS>	N
14 1 FORM CH RECS	Refer to relevant section in link above)	NText		<14 1 FORM CH RECS>	N
15 0 CONCL	Refer to relevant section in link above)	NText		<15 0 CONCL>	N
16 0 ACKS	Refer to relevant section in link above)	NText		<16 0 ACKS>	N

APPENDICES

APPENDIX A1 – DATE/TIME FORMAT

The DATE/TIME formats must adhere to the following standard:
ISO 8601 - Dates and times format – both local and UTC dates

[YYYY]-[MM]-[DD]T[HH]:[MM]Z for fields designated as UTC date/time

[YYYY]-[MM]-[DD]T[HH]:[MM] for fields designated as LOCAL date/time

APPENDIX A2 – POSITION/COORDINATE FORMAT

The Latitude and Longitude coordinates must adhere to the ISO 6709 – Positions
Degrees and minutes to 3 decimal places

LATITUDE +/- DDMM.MMM
LONGITUDE +/- DDDMM.MMM

APPENDIX A3 – PORT LOCATION CODES

The PORT LOCATION Codes must adhere to the UN/LOCODE standard UPPERCASE CHAR(5)
United Nations - Code for Trade and Transport Locations (UN/LOCODE) – see
<http://www.unece.org/cefact/locode/service/location>

APPENDIX A4 – VESSEL IDENTIFICATION

The attributes to be provided for the VESSEL needs to be consistent with several VESSEL registers at the global and regional level. The most important are the proposed IMO/UVI standard vessel identifier (UVI), the WCPFC vessel register and the FFA Vessel register.

FIELD	Data Collection Instructions	Field format notes	Validation rules	XML TAG	WCPFC FIELD
VESSEL NAME	PROVIDE the VESSEL attributes which should be consistent with the attributes stored in the WCPFC and FFA Regional Vessel Registers	CHAR(30) UPPER CASE	Must be consistent with the WCPFC and FFA Vessel Registers	<VESSELNAME>	Y
COUNTRY OF VESSEL REGISTRATION		CHAR(2) ISO 3166-1 alpha-2 two-letter country code UPPER CASE	ISO 3166-1 alpha-2 two-letter country code Must be consistent with the WCPFC and FFA Vessel Registers Country of registration is distinct from the chartering nation, where relevant	<COUNTRYREG>	Y
VESSEL REGISTRATION NUMBER		CHAR(20) UPPER CASE	Must be consistent with the WCPFC and FFA Vessel Registers	<REGNO>	Y
FFA VESSEL REGISTER NUMBER		INTEGER(5)	Must be consistent with the FFA Vessel Register	<FFAVID>	N
WCPFC RFV VID		INTEGER(10)	Must be consistent with the WCPFC RFV	<WIN>	Y
UNIVERSAL VESSEL IDENTIFIER (UVI)		INTEGER(10)	Must be consistent with the WCPFC and FFA Vessel Registers	<IMO_UVI>	N
VESSEL INTERNATIONAL CALLSIGN		CHAR(10) UPPER CASE	Must be consistent with the WCPFC and FFA Vessel Registers	<IRCS>	Y

APPENDIX A5 – PURSE SEINE OBSERVER ACTIVITY CODES

S_ACTIV_ID	Description	FAD reference (to record BEACON field)	FORM Code version (old)
1	Set	YES	1
2	Searching		2
3	Transit		3
4	No fishing - Breakdown		4
5	No fishing - Bad weather		5
6	In port - please specify		6
7	Net cleaning set		7
8	Investigate free school		8
9	Investigate floating object	YES	9
10	Deploy - raft, FAD or payao	YES	10D
11	Retrieve - raft, FAD or payao	YES	10R
12	No fishing - Drifting at day's end		11
13	No fishing - Drifting with floating object	YES	12
14	No fishing - Other reason (specify)		13
15	Drifting -With fish aggregating lights	YES	14
16	Retrieve radio buoy	YES	15R
17	Deploy radio buoy	YES	15D
18	Transshipping or bunkering		16
19	Servicing FAD or floating object	YES	17
20	<i>Helicopter takes off to search</i>		<i>H1</i>
21	<i>Helicopter returned from search</i>		<i>H2</i>

APPENDIX A6 – PURSE SEINE TUNA SCHOOL ASSOCIATION CODES

S_ACTIV_ID	Description	SCHOOL TYPE CATEGORY
1	Unassociated (free school)	UNASSOCIATED
2	Feeding on Baitfish (free school)	UNASSOCIATED
3	Drifting log, debris or dead animal	ASSOCIATED
4	Drifting raft, FAD or payao	ASSOCIATED
5	Anchored raft, FAD or payao	ASSOCIATED
6	Live whale	ASSOCIATED
7	Live whale shark	ASSOCIATED
8	Other (please specify)	
9	No tuna associated	

APPENDIX A7 – PURSE SEINE TUNA SCHOOL DETECTION CODES

DETON_ID	Description
1	Seen from vessel
2	Seen from helicopter; Use when vessel gets to the school of tuna that helicopter either: 1. reported on; or 2. dropped buoy on.
3	Marked with beacon
4	Bird radar
5	Sonar / depth sounder
6	Info. from other vessel
7	Anchored FAD / payao (recorded)

APPENDIX A8 – SPECIES CODES

Refer to the FAO three-letter species codes:

<http://www.fao.org/fishery/collection/asfis/en>

APPENDIX A9 – OBSERVER FATE CODES

FATE CODE	DESCRIPTION
DCF	Discarded - Line cut or Other
DDL	Discarded - Difficult to land
DFR	Discarded - fins removed and trunk discarded
DFW	Discarded - Discarded from well
DGD	Discarded - Gear damage
DNS	Discarded - No space in freezer
DOR	Discarded - other reason (specify)
DPA	Discarded - Protected species - Alive
DPD	Discarded - Protected species - Dead
DPQ	Discarded - poor quality
DPS	Discarded - protected species (e.g. turtles)
DPU	Discarded - Protected Species - Condition unknown
DSD	Discarded - Shark damage
DSO	Discarded - rejected (struck off before landing)
DTS	Discarded - too small
DUS	Discarded - Undesirable species
DVF	Discarded - Vessel fully loaded
DWD	Discarded - Whale damage
ESC	Escaped
RCC	Retained - Crew Consumption
RFL	Retained - Filleted
RFR	Retained - fins removed and trunk retained
RGG	Retained - gilled and gutted (retained for sale)
RGO	Retained - gutted only
RGT	Retained - gilled gutted and tailed (for sale)
RHG	Retained - headed and gutted (Marlin)
RHT	Retained - Headed, gutted and tailed
RMD	Retained - fins removed/trunk retained (MANDATORY)
ROR	Retained - other reason (specify)
RPT	Retained - partial (e.g. fillet, loin)
RSD	Retained - Shark damage
RTL	Retained - Tailed
RWD	Retained - Whale Damage
RWG	Retained - Winged
RWW	Retained - whole
UUU	Unknown - not observed

APPENDIX A10 – OBSERVER CONDITION CODES

CONDITION CODE	Description
A0	Alive but unable to describe condition
A1	Alive and healthy
A2	Alive, but injured or distressed
A3	Alive, but unlikely to live
A4	Entangled, okay
A5	Entangled, injured
A6	Hooked, externally, injured
A7	Hooked, internally, injured
A8	Hooked, unknown, injured
D	Dead
D1	Entangled, dead
D2	Hooked, externally, dead
D3	Hooked, internally, dead
D4	Hooked, unknown, dead
U	Condition, unknown
U1	Entangled, unknown condition
U2	Hooked, externally, condition unknown
U3	Hooked, internally, condition unknown
U4	Hooked, unknown, condition unknown

APPENDIX A11 – LENGTH CODES

Length Code	Description
AN	Anal fin length
BL	Bill to fork in tail
CC	Curved Carapace Length
CK	Cleithrum to anterior base caudal keel
CL	carapace length (turtles)
CW	Carapace width
CX	Cleithrum to caudal fork
EO	Posterior eye orbital to caudal fork
EV	Posterior eye orbital to vent
FF	1st dorsal to fork in tail
FN	Weight of all fins (sharks)
FS	1st dorsal to 2nd dorsal
FW	Fillets weight
GF	Gilled, gutted, headed, flaps removed
GG	Gilled and gutted weight
GH	Gutted and headed weight
GI	Girth
GO	Gutted only (gills left in)
GT	Gilled, gutted and tailed
GX	Gutted, headed and tailed
LF	lower jaw to fork in tail
NM	not measured
OW	Observer's Estimate
PF	pectoral fin to fork in tail
PS	Pectoral fin to 2nd dorsal
SC	Straight Carapace Length
SL	Tip of snout to end of caudal peduncle
TH	Body Thickness (Width)
TL	tip of snout to end of tail
TW	total width (tip of wings - rays)
UF	upper jaw to fork in tail
US	Upper jaw to 2nd dorsal fin
WW	Whole weight

APPENDIX A12 – SEX CODES

Sex Code	Description
F	Female
I	Indeterminate (checked but unsure)
M	Male
U	Unknown (not checked)

APPENDIX A13 – Vessel activity (SSI interaction) codes

Activity Code for interaction	Description
1	SETTING
2	HAULING
3	SEARCHING
4	TRANSITING
5	OTHER

APPENDIX A14 – SIZE and SPECIES COMPOSITION SAMPLE PROTOCOL

Sample Type	Description
R	Random (GRAB) sample
S	SPILL sample
B	Bycatch only sampling
F	Small-fish only sampling
O	Other type of sampling protocol (please specify)

APPENDIX A15 – MEASURING INSTRUMENTS Codes

Measure Code	Description
B	BOARD
C	CALLIPER - ALUMINIUM
E	EYE
R	RULER
T	TAPE
U	UNKNOWN
W	CALLIPER - WOOD

APPENDIX A16 – TRIP MONITORING QUESTION Codes

QUESTION CODE	Description	WCPFC Question
RS-A	Did the operator or any crew member assault, obstruct, resist, delay, refuse boarding to, intimidate or interfere with observers in the performance of their duties	Y
RS-B	Request that an event not be reported by the observer	Y
RS-C	Mistreat other crew	N
RS-D	Did operator fail to provide observer with food, accommodation, etc.	Y
NR-A	Fish in areas where the vessel is not permitted to fish	Y
NR-B	Target species other than those they are licenced to target	N
NR-C	Use a fishing method other than the method the vessel was designed or licensed	Y
NR-D	Not display or present a valid (and current) licence document onboard	N
NR-E	Transfer or transship fish from or to another vessel	Y
NR-F	Was involved in bunkering activities	N
NR-G	Fail to stow fishing gear when entering areas where vessel is not authorised to fish	Y
WC-A	Fail to comply with any Commission Conservation and Management Measures (CMMs)	Y
WC-B	High-grade the catch	Y
WC-C	Fish on FAD during FAD Closure	N
LP-A	Inaccurately record vessel position on vessel log sheets for sets, hauling and catch	Y
LP-B	Fail to report vessel positions to countries where required	Y
LC-A	Inaccurately record retained 'Target Species' in the Vessel logs [or weekly reports]	Y
LC-B	Inaccurately record 'Target Species' Discards	Y
LC-C	Record target species inaccurately [eg. combine bigeye/yellowfin/skipjack catch]	Y
LC-D	Not record bycatch discards	N
LC-E	Inaccurately record retained bycatch Species	Y
LC-F	Inaccurately record discarded bycatch species	Y
SI-A	Land on deck Species of Special Interest (SSIs)	N
SI-B	Interact (not land) with SSIs	Y
PN-A	Dispose of any metals, plastics, chemicals or old fishing gear	Y
PN-B	Discharge any oil	Y
PN-C	Lose any fishing gear	Y
PN-D	Abandon any fishing gear	Y
PN-E	Fail to report any abandoned gear	Y
SS-A	Fail to monitor international safety frequencies	Y
SS-B	Carry out-of-date safety equipment	N

APPENDIX A17 – VESSEL / AIRCRAFT SIGHTINGS Codes

CODE	Description
1	SINGLE PURSE SEINE
2	LOGLINE
3	POLE AND LINE
4	MOTHERSHIP
5	TROLL
6	NET BOAT
7	BUNKER
8	SEARCH, ANCHOR OR LIGHT BOAT
9	FISH CARRIER
10	TRAWLER
11	LIGHT AIRCRAFT
12	HELICOPTER
13	OTHER

APPENDIX A18 – ACTION Codes

Action Codes	Description	FORM Used
AG	Aground	GEN6
BG	Bunkering (transfer of fuel), vessel observer is on is GIVING	GEN1, GEN6
BR	Bunkering (transfer of fuel), vessel observer is on is RECEIVING	GEN1, GEN6
CR	Retained from a set solely because of catch-retention rules	PS5
DF	Dumping of fish	GEN1
DS	Discarded into the sea	PS5
FI	Fishing	GEN1, GEN6
FO	Fish On-board	PS5
FS	From set	PS5
NF	Not fishing	GEN1
OG	Other, vessel observer is on is GIVING	GEN1
OR	Other, vessel observer is on is RECEIVING	GEN1
PF	Possibly fishing	GEN1
SG	Set sharing, vessel observer is on is GIVING	GEN1
SR	Set sharing, vessel observer is on is RECEIVING	GEN1,PS5
TG	Transferring fish between vessels, vessel observer is on is GIVING	GEN1,PS5, GEN6
TR	Transferring fish between vessels, vessel observer is on is RECEIVING	GEN1,PS5, GEN6
UL	Unloaded at cannery or cool store	PS5
WT	Transferred between wells	PS5

GEN1 – Vessel / Aircraft sightings

GEN6 – Pollution Report

PS-5 – Purse seine Well transfer

APPENDIX A19 – Purse seine CREW JOB Codes

CODE	Description
1	CAPTAIN
2	NAVIGATOR/MASTER
3	MATE
4	CHIEF ENGINEER
5	ASSISTANT ENGINEER
6	DECK BOSS
7	COOK
8	HELICOPTER PILOT
9	SKIFF MAN
10	WINCH MAN
11	HELICOPTER MECHANIC
12	CREW
13	NAVIGATOR
14	FISHING MASTER
15	RADIO OPERATOR
16	TRANSLATOR

DRAFT

APPENDIX A20 – MARINE DEVICES Codes

Code	Description	WCPFC FIELD	GEAR LIST CODES
1	BATHYTHERMOGRAPH MBT	YES	
2	BIRD RADAR	YES	SP
3	CHART PLOTTER	YES	LSP
4	DEPTH SOUNDER	YES	LSP
5	DOPPLER CURRENT MONITOR	YES	
6	SATELLITE BUOY	YES	S
7	FISHERY INFORMATION SERVICES	YES	LSP
8	GPS	YES	LSP
9	NAVIGATIONAL RADAR #1	YES	LP
10	RADIO BUOYS - CALL-UP	YES	LSP
11	RADIO BUOYS - NON CALL-UP	YES	LSP
12	RADIO BEACON DIRECTION FINDER	YES	LSP
13	SATELLITE - HF TELEX	YES	
14	SEA SURFACE TEMP. GAUGE	YES	LP
15	SONAR	YES	LSP
16	HF RADIO TELEPHONE	YES	
17	SMART-LINK PHONE	YES	
18	TRACK PLOTTER	YES	LSP
19	VESSEL MONITORING SYSTEM (VMS)	YES	LSP
20	WEATHER FACSIMILE	YES	LP
21	WEATHER SATELLITE MONITOR	YES	
22	NET SOUNDER		LSP
23	BINOCULARS		P
24	ECHO SOUNDING BUOY		S
25	EPIRB		

APPENDIX A21 – DEVICE USAGE codes

Code	Description
	Not mentioned
ALL	used all the time for fishing
BRO	broken now but used normally
NA	Not applicable / Not filled
NOL	no longer ever used
OIF	used only in transit
RAR	used rarely
SIF	used often but only in fishing
TRA	used all the time

APPENDIX A22 – WEIGHT MEASUREMENT codes

Weight measurement code	Description
CW	Captain's Estimate
FN	Weight of all fins (sharks)
FW	Fillets weight
GF	Gilled, gutted, headed, flaps removed
GG	Gilled and gutted
GH	Gutted and headed
GO	Gutted only (gills left in)
GT	Gilled, gutted and tailed
GX	Gutted, headed and tailed
NM	Not measured
OW	Observer's Estimate
TW	Trunk weight
WW	Whole weight

APPENDIX A23 – GONAD STAGE codes

Gonad stage code	Short description	Description
N	No information	No information
I	Immature	Ovary small and slender. Cross-section round
E	Early Maturing	Enlarged, pale yellow ovaries. Ova not visible.
L	Late Maturing	Enlarged, turgid, orange-yellow ovaries. Ova opaque
M	Mature	Enlarged, richly vascular, orange ovaries, losing turgidity. Ova translucent.
R	Ripe	Greatly enlarged ovaries, not turgid. Ova easily dislodged and extruded by pressure.
S	Spent	Flaccid, vascular ovaries. Most ova gone. Often dark orange-red coloration.
R	Recovering	Vascular ovaries. Next batch of ova developing.

APPENDIX A24 – FAD ORIGIN codes

FAD ORIGIN CODE	Description
1	Your vessel deployed this trip
2	Your vessel deployed previous trip
3	Other vessel (owner consent)
4	Other vessel (no owner consent)
5	Other vessel (consent unknown)
6	Drifting and found by your vessel
7	Deployed by FAD auxiliary vessel
8	Origin unknown
9	Other origin

APPENDIX A25 – FAD DETECTION codes

FAD DETECTION CODE	Description
1	Seen from Vessel (no other method)
2	Seen from Helicopter
3	Marked with Radio beacon
4	Bird Radar
6	Info. from other vessel
7	Anchored (GPS)
8	Marked with Satellite Beacon
9	Navigation Radar
10	Lights
11	Flock of Birds sighted from vessel
12	Other (please specify)
13	Vessel deploying FAD (not detected)

APPENDIX A26 – FAD MATERIAL codes

FAD MATERIAL CODE	Description
1	Logs, Trees or debris tied together
2	Timber/planks/pallets/spools
3	PVC or Plastic tubing
4	Plastic drums
5	Plastic Sheeting
6	Metal Drums (i.e. 44 gallon)
7	Philippines design drum FAD
8	Bamboo/Cane
9	Floats/Corks
10	Unknown (describe)
11	Chain, cable rings, weights
12	Cord/rope
13	Netting hanging underneath FAD
14	Bait containers
15	Sacking/bagging
16	Coconut fronds/tree branches
17	Other (describe)

APPENDIX A27 – FAD TYPE codes

FAD TYPE CODE	Description
1	Man made object (Drifting FAD)
2	Man made object (Non FAD)
3	Tree or log (natural, free floating)
4	Tree or logs (converted into FAD)
5	Debris (flotsam bunched together)
6	Dead Animal (specify; i.e. whale, horse, etc.)
7	Anchored Raft, FAD, or Payao
8	Anchored Tree or Logs
9	Other (please specify)
10	Man made object (Drifting FAD)-changed

APPENDIX A28 – POLLUTION GEAR codes

POLLUTION GEAR CODE	DESCRIPTION
1	Lost during fishing
2	Abandoned
3	Dumped

APPENDIX A29 – POLLUTION MATERIALS codes

POLLUTION MATERIALS CODES	DESCRIPTION
1	Plastics
2	Metals
3	Waste Oils
4	Chemicals
5	Old fishing gear
6	General garbage

APPENDIX A30 – POLLUTION SOURCE codes

POLLUTION SOURCE CODES	DESCRIPTION
1	Vessel Aground/Collision
2	Vessel at Anchor/Bearth
3	Vessel Underway
4	Land Based Source
5	Other

APPENDIX A31 – POLLUTION TYPE codes

POLLUTION TYPE CODES	DESCRIPTION
1	Waste dumped overboard
2	Oil spillages and leakages
3	Abandoned or Lost Fishing Gear

Attachment 4

CONSULTATION DOCUMENT: DRAFT – SSPs FOR ELECTRONIC REPORTING IN THE WCPFC_{as} amended by
ERandEMWG1

Attachment 3B. Electronic data standard to be used for Paragraph 3 and Annex 1 of Scientific Data to be Provided to the Commission

Western and Central Pacific Fisheries Commission (WCPFC)

E-REPORTING STANDARD DATA FIELDS

OPERATIONAL LOGSHEET DATA

Draft – Version 2.0

7th June 2015

Contents

INTRODUCTION	2
1.PURSE SEINE LOGBOOK E-REPORTING STANDARDS	3
1.1 DATA MODEL DIAGRAM.....	3
1.2 PURSE SEINE TRIP-LEVEL DATA	4
1.3 LICENSE/PERMIT DATA.....	6
1.4 PS UNLOADING DATA.....	7
1.5 PS ACTIVITY DATA	9
1.6 PS SET LEVEL DATA.....	10
1.7 PS CATCH DATA.....	11
1.8 PS DISCARD DATA.....	12
1.9 PS WELL TRANSFER DATA.....	13
2.LONGLINE LOGBOOK E-REPORTING STANDARDS	14
2.1 DATA MODEL DIAGRAM.....	14
2.2 LONGLINE TRIP-LEVEL DATA	15
2.3 LICENSE/PERMIT DATA.....	17
2.4 LL ACTIVITY/SET DATA.....	18
2.5 LL CATCH DATA	19
APPENDICES.....	20
APPENDIX A1 – DATE/TIME FORMAT	20
APPENDIX A2 – POSITION/COORDINATE FORMAT	20
APPENDIX A3 – PORT LOCATION CODES	20
APPENDIX A4 – VESSEL IDENTIFICATION	21
APPENDIX A5 – PURSE SEINE OBSERVER ACTIVITY CODES	22
APPENDIX A6 – PURSE SEINE TUNA SCHOOL ASSOCIATION CODES	22
APPENDIX A7 – SPECIES CODES	22
APPENDIX A8 – PURSE SEINE REASON FOR DISCARD	23

INTRODUCTION

These tables set out the proposed standards for the provision of operational logsheet data fields collected in the WCPFC tropical purse seine fishery and the longline fisheries through E-Reporting. These tables provide the minimum requirements for data entities, data formats and data validation to be established for data submitted to the national and regional fisheries authorities from E-Reporting systems. The data fields contained herein are based on information collected under the current regional standard data collection forms. This document acknowledges that national fisheries authorities require data (e.g. licence/permit numbers and for anticipated Catch Documentation System – CDS – requirements) that are not mandatory WCPFC data fields, so a column in these tables identifies whether the data field is a mandatory WCPFC data field¹ or not.

These E-Reporting data field standards are consistent with, and should be considered in conjunction with more detailed instructions² on how to collect LOGBOOK data provided by SPC.

These tables are intended for, *inter alia*, E-Reporting service providers who have been contracted to provide electronic systems to record LOGBOOK information on-board purse seine vessels.

¹ The mandatory WCPFC data fields for operational LOGBOOK data are found in the “Scientific Data to be provided to the Commission - Attachment K, Annex 1. Standards for the Provision of Operational Level Catch and Effort Data”

<http://www.wcpfc.int/system/files/Scientific%20Data%20to%20be%20Provided%20to%20the%20Commission%20-%20decision%20made%20by%20WCPFC10%20%28clean%29.pdf>

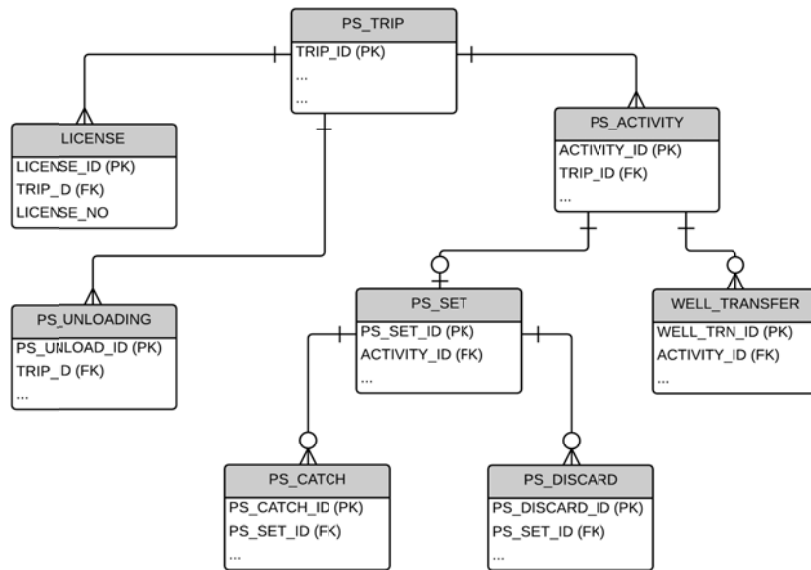
² In addition to the WCPFC LOGBOOK data fields requirements, instructions for LOGBOOK data collection in the WCPFC Area are available with the regional standard observer data collection forms at

<http://www.spc.int/oceanfish/en/data-collection/241-data-collection-forms>.

1. PURSE SEINE LOGBOOK E-REPORTING STANDARDS

1.1 DATA MODEL DIAGRAM

The following basic data model diagram outlines the structure of the entities and their relationships for purse seine operational logsheet data collected by E-Reporting systems and submitted to national and regional fisheries authorities. The tables that follow provide more information on the mechanisms of the links (relationships) between the entities.



1.2 PURSE SEINE TRIP-LEVEL DATA

PS_TRIP						
"The start of a trip is defined to occur when a vessel (a) leaves port after unloading part or all of the catch to transit to a fishing area or (b) recommences fishing operations or transits to a fishing area after transshipping part or all of the catch at sea (when this occurs in accordance with the terms and conditions of article 4 of Annex III of the Convention, subject to specific exemptions as per article 29 of the Convention)."						
FIELD	Data Collection Instructions	Field format notes	Validation rules	NAF CODE	XML TAG	WCPFC FIELD
TRIP IDENTIFIER	Internally generated. Can be NATURAL KEY or unique integer. NATURAL KEY would be VESSEL IDENTIFIER + DEPARTURE DATE				<TRIP_ID>	
VESSEL IDENTIFIER			REFER TO APPENDIX A4			
COUNTRY OF CHARTER	PROVIDE the Country responsible for chartering the vessel, where relevant. This only applies if the vessel has been chartered according to the requirements under WCPFC CMM 2012-05 - chartering notifications.	CHAR(2) ISO 3166-1 alpha-2 two-letter country code UPPER CASE	ISO 3166-1 alpha-2 two-letter country code This field must be completed if it has been listed as a chartered vessel on the WCPFC web site according to the requirements under WCPFC CMM 2012-05 - chartering notifications.	CS	<CHARTER>	Y
AGENT FOR UNLOADING	PROVIDE the name of the Agent for the Unloading	CHAR(50)	Where possible, link this field to a reference table of authorised Agents for unloading. (referential integrity)	AN	<AGENT>	N
TRIP NUMBER	PROVIDE the trip number undertaken by this vessel for the year. Trip number is sequential, starting at 1 for first trip of the year for each vessel.	INTEGER(2)		TN	<TRIPNO>	N
PORT OF DEPARTURE	PROVIDE the Port of Departure	REFER TO APPENDIX A3	Must be valid United Nations - Code for Trade and Transport Locations (UN/LOCODE) - see http://www.unece.org/cefact/locode/service/location	PE	<PORTDEPART>	Y
PLACE OF UNLOADING	PROVIDE the Port of Return for Unloading	REFER TO APPENDIX A3	Must be valid United Nations - Code for Trade and Transport Locations (UN/LOCODE)	PO	<PORTUNLOAD>	Y
DATE and TIME OF DEPARTURE	PROVIDE the GMT/UTC DATE and TIME of departure for this	REFER TO APPENDIX A1	ISO 8601 - Dates and times format The chronology of Departure date with respect to Date of	SD ST	<DATEDEPART> <TIMEDEPART>	Y

PS_TRIP

“The start of a trip is defined to occur when a vessel (a) leaves port after unloading part or all of the catch to transit to a fishing area or (b) recommences fishing operations or transits to a fishing area after transshipping part or all of the catch at sea (when this occurs in accordance with the terms and conditions of article 4 of Annex III of the Convention, subject to specific exemptions as per article 29 of the Convention).”

FIELD	Data Collection Instructions	Field format notes	Validation rules	NAF CODE	XML TAG	WCPFC FIELD
	trip		arrival in port and the Days at sea must be valid.			
DATE AND TIME OF ARRIVAL IN PORT	PROVIDE the GMT/UTC DATE and TIME of arrival back in port for this trip	REFER TO APPENDIX A1	ISO 8601 - Dates and times format The chronology of Arrival date with respect to Date of Departure and the Days at sea must be valid.	ED ET	<DATEARRIVAL > <TIMEARRIVAL >	Y
FISH ONBOARD - START	PROVIDE the total amount of fish on-board at the time of leaving port on this trip.	NUMBER(4)	WARNING: Should be a realistic amount. For example, having catch >200 t. would be unrealistic?	QS	<AMOUNTSTART >	N
FISH ONBOARD - END	PROVIDE the total amount of fish on-board AFTER ALL UNLOADINGS have been undertaken before the next trip.	NUMBER(4)	WARNING: Should be a realistic amount. For example, having catch >200 t. would be unrealistic? Having catch greater than what was caught on the trip is not possible.	QE	<AMOUNTAFTER >	N

1.3 LICENSE/PERMIT DATA

LICENSE						
PROVIDE each LICENSE/PERMIT that the vessel holds for the period of the trip.						
FIELD	Data Collection Instructions	Field format notes	Validation rules	NAF CODE	XML TAG	WCPFC FIELD
TRIP IDENTIFIER	Internally generated. Can be NATURAL KEY or unique integer. NATURAL KEY would be VESSEL + DEPARTURE DATE				<TRIP_ID>	
FISHING PERMIT/LICENSE NUMBERS	PROVIDE License/Permit number that the vessel holds for the period of the TRIP.	CHAR(40) UPPER CASE	Where possible, include validation to ensure the Permit format relevant to the agreement (national or sub-regional) complies to the required format.	LC	<LICENSE_NO>	N

DRAFT - not for release

1.4 PS UNLOADING DATA

PS UNLOADING						
PROVIDE information for TRIP UNLOADING INFORMATION which covers one or several unloading events during or at the end of the trip to (i) carriers, (ii) on-shore processing plants (Canneries) and/or (iii) a net-share event with another catcher vessel						
FIELD	Data Collection Instructions	Field format notes	Validation rules	NAF CODE	XML TAG	WCPFC FIELD
TRIP IDENTIFIER	Internally generated. Can be NATURAL KEY or unique integer. NATURAL KEY would be VESSEL + DEPARTURE DATE		Link to TRIP information		<TRIP_ID>	
UNLOADING START DATE	PROVIDE the start date for this specific Unloading event	REFER TO APPENDIX A1	ISO 8601 - Dates and times format GMT/UTC time [YYYY]-[MM]-[DD]T[HH]:[MM]Z The chronology of Unload Start date with respect to other dates for the trip and unloading must be valid.	SD	<STARTDATE>	N
UNLOADING END DATE	PROVIDE the end date for this specific Unloading event	REFER TO APPENDIX A1	ISO 8601 - Dates and times format GMT/UTC time [YYYY]-[MM]-[DD]T[HH]:[MM]Z The chronology of Unload End date with respect to other dates for the trip and unloading must be valid.	ED	<ENDDATE>	N
CARRIER VESSEL IDENTIFIER	REFER TO APPENDIX A4 If relevant, PROVIDE the receiving CARRIER VESSEL for this specific Unloading event. Note that for NET-SHARE events, this could be another purse seine catcher vessel. If Relevant, PROVIDE the FFA VID for the CARRIER vessel. Must be consistent with the WCPFC and FFA Vessel Registers					
CANNERY/ DESTINATION	If relevant, PROVIDE the receiving CANNERY/DESTINATION for this specific Unloading event.	CHAR(40) UPPER CASE	Where possible, link this field to a reference table of authorised Canneries/Destinations (referential integrity)	FD FN	<DESTINATION>	N
SKJ UNLOADED	PROVIDE the total weight (metric tonnes) of SKIPJACK unloaded in this specific Unloading event	DECIMAL(7,3)	CONTROL TOTAL CHECK: Total amounts for this trip should reconcile checking total trip catch, catch on-board at start, catch on-board at end and all unloading events.	DQ	<UNLOADSKJ>	N
YFT UNLOADED	PROVIDE the total weight (metric tonnes) of YELLOWFIN unloaded in this specific Unloading event	DECIMAL(7,3)		DQ	<UNLOADYFT>	N
BET UNLOADED	PROVIDE the total weight (metric tonnes) of BIGEYE unloaded in this specific Unloading event	DECIMAL(7,3)		DQ	<UNLOADBET>	N
MIXED TUNA UNLOADED	PROVIDE the total weight (metric tonnes) of MIXED TUNA unloaded in this specific Unloading event	DECIMAL(7,3)		DQ	<UNLOADMIX>	N

PS_UNLOADING

PROVIDE information for TRIP UNLOADING INFORMATION which covers one or several unloading events during or at the end of the trip to (i) carriers, (ii) on-shore processing plants (Canneries) and/or (iii) a net-share event with another catcher vessel

FIELD	Data Collection Instructions	Field format notes	Validation rules	NAF CODE	XML TAG	WCPFC FIELD
OTHERS UNLOADED	PROVIDE the total weight (metric tonnes) of OTHERS unloaded in this specific Unloading event	DECIMAL(7,3)		DQ	<UNLOADOTH>	N
REJECTS UNLOADED	PROVIDE the total weight (metric tonnes) of REJECTED TUNA unloaded in this specific Unloading event	DECIMAL(7,3)		RT	<UNLOADREJ>	N

DRAFT - not for release

1.5 PS ACTIVITY DATA

PS ACTIVITY						
PROVIDE information on the designated activities for each DAY AT SEA						
FIELD	Data Collection Instructions	Field format notes	Validation rules	NAF CODE	XML TAG	WCPFC FIELD
TRIP IDENTIFIER	Internally generated. Can be NATURAL KEY or unique integer. NATURAL KEY would be VESSEL + DEPARTURE DATE		Link to TRIP information		<TRIP_ID>	
ACTIVITY IDENTIFIER	Internally generated. Can be NATURAL KEY or unique integer. NATURAL KEY would be DATE + START TIME OF ACTIVITY				<ACTIVITY_ID>	
DATE	PROVIDE the DATE for each day that the vessel is at sea.	REFER TO APPENDIX A1	Expect to be automatically integrated/generated with GPS DEVICE	DA	<DATE_EVENT >	Y
START TIME OF ACTIVITY	PROVIDE the time when the ACTIVITY started	REFER TO APPENDIX A1	Expect to be automatically integrated/generated with GPS DEVICE	ST	<TIME_EVENT>	Y
LATITUDE	PROVIDE the LATITUDE position when the ACTIVITY started	REFER TO APPENDIX A2	Expect to be automatically integrated/generated with GPS DEVICE	LT	<LAT> <LATH>	Y
LONGITUDE	PROVIDE the LONGITUDE position when the ACTIVITY started	REFER TO APPENDIX A2	Expect to be automatically integrated/generated with GPS DEVICE	LG	<LON> <LONH>	Y
ACTIVITY	PROVIDE each new ACTIVITY of the vessel within the DAY	REFER TO APPENDIX A5	The code must be within the valid range. Ensure relational integrity for certain values, for example, "1 - Fishing Set" must link to a SET record and perhaps to other tables "8 - Non-Set Well Transfer" must link to a WELL TRANSFER record	AT	<S_ACT_ID>	Y

1.6 PS SET LEVEL DATA

PS SET						
PROVIDE information for each FISHING SET						
FIELD	Data Collection Instructions	Field format notes	Validation rules	NAF CODE	XML TAG	WCPFC FIELD
TRIP IDENTIFIER	Internally generated. Can be NATURAL KEY or unique integer. NATURAL KEY would be VESSEL + DEPARTURE DATE		Link to TRIP information		<TRIP_ID>	
ACTIVITY IDENTIFIER	Internally generated. Can be NATURAL KEY or unique integer. NATURAL KEY would be DATE + START TIME OF ACTIVITY		Link to ACTIVITY (SET)		<ACTIVITY_ID >	
START DATE/TIME OF SET	PROVIDE the start time of the set which is defined at the time the SKIFF is launched.	REFER TO APPENDIX A1	Expect to be automatically integrated/generated with GPS DEVICE The chronology of SET START TIME with respect to other dates/times for the trip must be valid.	ST	<SETSTART>	Y
END DATE/TIME OF SET	PROVIDE the end time of the set which is defined as the time when the "RINGS UP" ON DECK.	REFER TO APPENDIX A1	Expect to be automatically integrated/generated with GPS DEVICE The chronology of SET END TIME with respect to other dates/times for the trip must be valid.	ET	<SETEND>	Y
SCHOOL ASSOCIATION	PROVIDE the School Associated Code	REFER TO APPENDIX A6	The code must be within the valid range.	SA	<SCHOOL>	Y
SCHOOL ASSOCIATION NOTE	PROVIDE information of the SCHOOL ASSOCIATION in cases where the school association is not covered in the list of School association codes 1. To 7.	VARCHAR(30)	Used only when the SCHOOL ASSOCIATION = 8	SA	<SCH_NOTE>	Y

1.7 PS CATCH DATA

PS_CATCH						
PROVIDE information on each species catch RETAINED from a SET						
FIELD	Data Collection Instructions	Field format notes	Validation rules	NAF CODE	XML TAG	WCPFC FIELD
TRIP IDENTIFIER	Internally generated. Can be NATURAL KEY or unique integer. NATURAL KEY would be VESSEL + DEPARTURE DATE		Link to TRIP information		<TRIP_ID>	
ACTIVITY IDENTIFIER	Internally generated. Can be NATURAL KEY or unique integer. NATURAL KEY would be DATE + START TIME OF ACTIVITY		Link to ACTIVITY (SET)		<ACTIVITY_ID>	
SET IDENTIFIER	Internally generated. Can be NATURAL KEY or unique integer. NATURAL KEY would be DATE + START TIME OF SET		Link to PS_SET		<PS_SET_ID>	
SPECIES CODE	For each species taken in the set and RETAINED, PROVIDE the SPECIES CODE according to the FAO standard species code list	CHAR(3)	REFER TO APPENDIX 7.	DC	<SP_CODE>	Y
SIZE CATEGORY	For Yellowfin (YFT) and Bigeye tuna (BET) RETAINED catch, distinguish the catch by size category < 9kgs and > 9kgs) otherwise leave blank.	CHAR(2)	LG - Large Fish (>= 9 kgs) SM - Small Fish (< 9 kgs) <Blank> - Not applicable Validate that it can only be used for YFT and BET.	DC	<SP_SIZE>	N
WELL TO	Well number where the catch is moved to. Set catch for this species/size category may be moved to more than one well. (Used for Catch Documentation systems).	CHAR(3)	Valid code DIS - Discard of fish to sea from a well (e.g. due to spoilage) Snn - Starboard well with number = <nn> Pnn - Port well with number = <nn> Cnn - Central well with number = <nn>	TC	<WELL_TO>	N
RETAINED WEIGHT	PROVIDE the RETAINED ESTIMATED WEIGHT (metric tonnes, to 3 decimal places if possible) covering this species/size category combination.	DECIMAL(7,3)	Validate that it is within the acceptable range for this species. (Refer to the SPECIES_RANGE table provided)	DC	<SP_RET_MT>	Y
RETAINED NUMBER	PROVIDE the RETAINED NUMBER covering this species/size category combination. This is only required for non-target species.	INTEGER(6)	Validate that it is within the acceptable range for this species. (Refer to the SPECIES_RANGE table provided)	DC	<SP_RET_NO>	N

1.8 PS DISCARD DATA

PS DISCARD						
PROVIDE information on each species catch DISCARDED from a SET						
FIELD	Data Collection Instructions	Field format notes	Validation rules	NAF CODE	XML TAG	WCPFC FIELD
TRIP IDENTIFIER	Internally generated. Can be NATURAL KEY or unique integer. NATURAL KEY would be VESSEL + DEPARTURE DATE		Link to TRIP information		<TRIP_ID>	
ACTIVITY IDENTIFIER	Internally generated. Can be NATURAL KEY or unique integer. NATURAL KEY would be DATE + START TIME OF ACTIVITY		Link to ACTIVITY (SET)		<ACTIVITY_ID>	
SET IDENTIFIER	Internally generated. Can be NATURAL KEY or unique integer. NATURAL KEY would be DATE + START TIME OF SET		Link to PS_SET		<PS_SET_ID>	
SPECIES CODE	For each species taken in the set and DISCARDED, PROVIDE the SPECIES CODE according to the FAO standard species code list	CHAR(3)	REFER TO APPENDIX 7.	DI	<SP_CODE>	Y
DISCARDED WEIGHT	PROVIDE the DISCARDED ESTIMATED WEIGHT (metric tonnes, to 3 decimal places if possible) covering this species.	DECIMAL(7,3)	Validate that it is within the acceptable range for this species. (Refer to the SPECIES_RANGE table provided)	DI	<SP_DISC_MT>	Y
DISCARDED NUMBER	PROVIDE the DISCARDED NUMBER, where appropriate.	INTEGER(6)	Validate that it is within the acceptable range for this species. (Refer to the SPECIES_RANGE table provided)	DI	<SP_DISC_NO>	Y
REASON FOR DISCARD	PROVIDE the reason for the DISCARD.	INTEGER(1)	REFER TO APPENDIX 8.	DI	<DISC_REA_ID>	Y
REASON FOR DISCARD NOTE	PROVIDE information of the REASON FOR DISCARD in cases where the code is not covered in the list of Reason codes 1. To 4.	VARCHAR(30)	Used only when the REASON FOR DISCARD = 5	DI	<DISC_NOTE>	Y

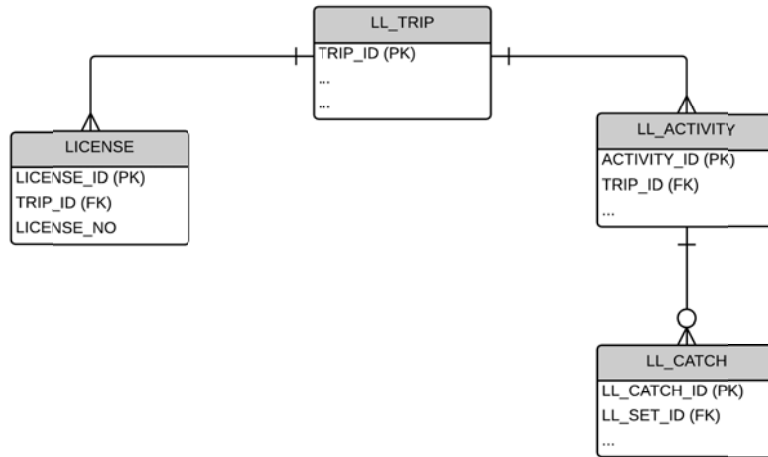
1.9 PS WELL TRANSFER DATA

WELL TRANSFER						
PROVIDE information on each WELL TRANSFER or NET-to-WELL TRANSFER when the relevant ACTIVITIES are recorded						
FIELD	Data Collection Instructions	Field format notes	Validation rules	NAF CODE	XML TAG	WCPFC FIELD
TRIP IDENTIFIER	Internally generated. Can be NATURAL KEY or unique integer. NATURAL KEY would be VESSEL + DEPARTURE DATE		Link to TRIP information		<TRIP_ID>	
ACTIVITY IDENTIFIER	Internally generated. Can be NATURAL KEY or unique integer. NATURAL KEY would be DATE + START TIME OF ACTIVITY		Link to ACTIVITY (SET or WELL TRANSFER)		<ACTIVITY_ID>	
WELL FROM	Well number or the NET (in the case of a set) where the catch is coming from.	CHAR(3)	Valid code Snn - Starboard well with number = <nn> Pnn - Port well with number = <nn> Cnn - Central well with number = <nn>	TC	<WELL_FROM>	N
WELL TO	Well number where the catch is moved to. Note that this includes DISCARDS of fish from the well.	CHAR(3)	Valid code DIS - Discard of fish to sea from a well (e.g. due to spoilage) Snn - Starboard well with number = <nn> Pnn - Port well with number = <nn> Cnn - Central well with number = <nn>	TC	<WELL_TO>	N
SPECIES CODE	For each species catch transferred, PROVIDE the SPECIES CODE according to the FAO standard species code list	CHAR(3) UPPER CASE	REFER TO APPENDIX 7.	TC	<SP_CODE_WELL>	N
SIZE CATEGORY	For Yellowfin (YFT) and Bigeye tuna (BET) transferred catch, distinguish the catch by size category < 9kgs and > 9kgs) otherwise leave blank.	CHAR(2)	LG - Large Fish (>= 9 kgs) SM - Small Fish (< 9 kgs) <Blank> - Not applicable Validate that it can only be used for YFT and BET.	DC	<SP_WELL_SIZE>	N
WEIGHT TRANSFERRED	PROVIDE the WEIGHT (metric tonnes, to 3 decimal places if possible) of the species transferred.	DECIMAL(6,3)		TC	<SP_WELL_MT>	N

2. LONGLINE LOGBOOK E-REPORTING STANDARDS

2.1 DATA MODEL DIAGRAM

The following basic data model diagram outlines the structure of the entities and their relationships for longline operational logsheet data collected by E-Reporting systems and submitted to national and regional fisheries authorities. The tables that follow provide more information on the mechanisms of the links (relationships) between the entities.



2.2 LONGLINE TRIP-LEVEL DATA

LL_TRIP						
“The start of a trip is defined to occur when a vessel (a) leaves port after unloading part or all of the catch to transit to a fishing area or (b) recommences fishing operations or transits to a fishing area after transshipping part or all of the catch at sea (when this occurs in accordance with the terms and conditions of article 4 of Annex III of the Convention, subject to specific exemptions as per article 29 of the Convention).”						
FIELD	Data Collection Instructions	Field format notes	Validation rules	NAF CODE	XML TAG	WCPFC FIELD
TRIP IDENTIFIER	Internally generated. Can be NATURAL KEY or unique integer. NATURAL KEY would be VESSEL IDENTIFIER + DEPARTURE DATE				<TRIP_ID>	
VESSEL IDENTIFIER	REFER TO APPENDIX A4					
COUNTRY OF CHARTER	PROVIDE the Country responsible for chartering the vessel, where relevant. This only applies if the vessel has been chartered according to the requirements under WCFPC CMM 2012-05 - chartering notifications.	CHAR(2) ISO 3166-1 alpha-2 two-letter country code UPPER CASE	ISO 3166-1 alpha-2 two-letter country code This field must be completed if it has been listed as a chartered vessel on the WCFPC web site according to the requirements under WCFPC CMM 2012-05 - chartering notifications.	CS	<CHARTER>	Y
AGENT FOR UNLOADING	PROVIDE the name of the Agent for the Unloading	CHAR(50)	Where possible, link this field to a reference table of authorised Agents for unloading. (referential integrity)	AN	<AGENT>	N
TRIP NUMBER	PROVIDE the trip number undertaken by this vessel for the year. Trip number is sequential, starting at 1 for first trip of the year for each vessel.	INTEGER(2)		TN	<TRIPNO>	N
PRIMARY TARGET SPECIES	PROVIDE the Primary Target species for this trip	CHAR(3)	REFER TO APPENDIX A7	DC	<SP_CODE_TARGET>	N
PORT OF DEPARTURE	PROVIDE the Port of Departure	CHAR(5) UN/LOCODE UPPERCASE	REFER TO APPENDIX A3	PE	<PORTDEPART>	Y
PLACE OF UNLOADING / TRANSHIPMENT AT SEA	PROVIDE the Port of Return for Unloading or indicate TRANSHIPMENT AT SEA	CHAR(5) UN/LOCODE UPPERCASE	REFER TO APPENDIX A3	PO	<PORTUNLOAD>	Y

LL_TRIP

“The start of a trip is defined to occur when a vessel (a) leaves port after unloading part or all of the catch to transit to a fishing area or (b) recommences fishing operations or transits to a fishing area after transshipping part or all of the catch at sea (when this occurs in accordance with the terms and conditions of article 4 of Annex III of the Convention, subject to specific exemptions as per article 29 of the Convention).”

FIELD	Data Collection Instructions	Field format notes	Validation rules	NAF CODE	XML TAG	WCPFC FIELD
DATE and TIME OF DEPARTURE	PROVIDE the GMT/UTC DATE and TIME of departure for this trip	REFER TO APPENDIX A1	REFER TO APPENDIX A1	SD ST	<DATEDEPART>	Y
DATE AND TIME OF ARRIVAL IN PORT / TRANSHIPMENT AT SEA	PROVIDE the GMT/UTC DATE and TIME of arrival back in port for this trip or indicate DATE for the TRANSHIPMENT AT SEA	REFER TO APPENDIX A1	REFER TO APPENDIX A1	ED ET	<DATEARRIVAL>	Y

2.3 LICENSE/PERMIT DATA

LICENSE						
PROVIDE each LICENSE/PERMIT that the vessel holds for the period of the trip.						
FIELD	Data Collection Instructions	Field format notes	Validation rules	NAF CODE	XML TAG	WCPFC FIELD
TRIP IDENTIFIER	Internally generated. Can be NATURAL KEY or unique integer. NATURAL KEY would be VESSEL + DEPARTURE DATE				<TRIP_ID>	
FISHING PERMIT/LICENSE NUMBERS	PROVIDE License/Permit number that the vessel holds for the period of the TRIP.	CHAR(40) UPPER CASE	Where possible, include validation to ensure the Permit format relevant to the agreement (national or sub-regional) complies to the required format.	LC	<LICENSE_NO>	N

DRAFT - not for release

2.4 LL ACTIVITY/SET DATA

LL ACTIVITY						
PROVIDE the following information on EACH FISHING SET; if there was no fishing set on that day, provide information on the MAIN ACTIVITY FOR THAT DAY AT SEA						
FIELD	Data Collection Instructions	Field format notes	Validation rules	NAF CODE	XML TAG	WCPFC FIELD
TRIP IDENTIFIER	Internally generated. Can be NATURAL KEY or unique integer. NATURAL KEY would be VESSEL + DEPARTURE DATE		Link to TRIP information		<TRIP_ID>	
ACTIVITY IDENTIFIER	Internally generated. Can be NATURAL KEY or unique integer. NATURAL KEY would be DATE + START TIME OF ACTIVITY				<ACTIVITY_ID>	
ACTIVITY DATE/TIME	PROVIDE the NOON DATE/TIME for each day that the vessel is at sea when a set was not made on that day, OR the START DATE/TIME of the SET	REFER TO APPENDIX A1	Expect to be automatically integrated/generated with GPS DEVICE	DA	<ACT_DATE>	Y
ACTIVITY	PROVIDE the ACTIVITY CODE	NUMBER(2)	REFER TO APPENDIX A5	AT	<L_ACT_ID>	Y
LATITUDE	PROVIDE the LATITUDE position when the ACTIVITY started	REFER TO APPENDIX A2	Expect to be automatically integrated/generated with GPS DEVICE Check of position relative to previous position and whether it is realistic to have travelled that distance in the allotted time.	LT	<LAT> <LATH>	Y
LONGITUDE	PROVIDE the LONGITUDE position when the ACTIVITY started	REFER TO APPENDIX A2	Expect to be automatically integrated/generated with GPS DEVICE Check of position relative to previous position and whether it is realistic to have travelled that distance in the allotted time.	LG	<LON> <LONH>	Y
HOOKS BETWEEN FLOATS	PROVIDE the HOOKS BETWEEN FLOATS (synonymous to BRANCHLINES between FLOATS) for this set	NUMBER(2)	The code must be within the valid range. Only relevant with ACTIVITY = "1 - FISHING SET"	SA	<HK_BTWN_FLT>	Y
HOOKS	PROVIDE the total number of HOOKS set	NUMBER(4)	The code must be within the valid range (e.g. < 5,000 hooks). Only relevant with ACTIVITY = "1 - FISHING SET"	SA	<HOOKS>	Y

2.5 LL CATCH DATA

LL_CATCH						
PROVIDE information on each species catch from a SET						
FIELD	Data Collection Instructions	Field format notes	Validation rules	NAF CODE	XML TAG	WCPFC FIELD
TRIP IDENTIFIER	Internally generated. Can be NATURAL KEY or unique integer. NATURAL KEY would be VESSEL + DEPARTURE DATE		Link to TRIP information		<TRIP_ID>	
ACTIVITY IDENTIFIER	Internally generated. Can be NATURAL KEY or unique integer. NATURAL KEY would be DATE + START TIME OF ACTIVITY		Link to ACTIVITY (SET)		<ACTIVITY_ID>	
SPECIES CODE	For each species taken in the set, PROVIDE the SPECIES CODE according to the FAO standard species code list	CHAR(3) UPPER CASE	REFER TO APPENDIX 8.	DC	<SP_CODE_RET>	Y
RETAINED NUMBER	PROVIDE the NUMBER OF RETAINED FISH covering this species.	INTEGER(6)	Validate that it is within the acceptable range for this species. (Refer to the SPECIES_RANGE table provided)	DC	<SP_RET_NO>	Y
RETAINED WEIGHT	PROVIDE the RETAINED ESTIMATED WEIGHT (metric tonnes to three decimal places) for this species.	DECIMAL(6,3)	Validate that it is within the acceptable range for this species. (Refer to the SPECIES_RANGE table provided)	DC	<SP_RET_MT>	Y
DISCARDED / RELEASED NUMBER	PROVIDE the NUMBER of this species DISCARDED or RELEASED.	INTEGER(6)	Validate that it is within the acceptable range for this species. (Refer to the SPECIES_RANGE table provided)	DC	<SP_RET_NO>	Y

APPENDICES

APPENDIX A1 – DATE/TIME FORMAT

The DATE/TIME formats must adhere to the following standard:
ISO 8601 - Dates and times format – both local and UTC dates

[YYYY]-[MM]-[DD]T[HH]:[MM]Z for fields designated as UTC date/time

[YYYY]-[MM]-[DD]T[HH]:[MM] for fields designated as LOCAL date/time

APPENDIX A2 – POSITION/COORDINATE FORMAT

The Latitude and Longitude coordinates must adhere to the ISO 6709 – Positions
Degrees and minutes to 3 decimal places

LATITUDE +/- DDMM.MMM
LONGITUDE +/- DDDMM.MMM

APPENDIX A3 – PORT LOCATION CODES

The PORT LOCATION Codes must adhere to the UN/LOCODE standard UPPERCASE CHAR(5)
United Nations - Code for Trade and Transport Locations (UN/LOCODE) – see
<http://www.unece.org/cefact/locode/service/location>

APPENDIX A4 – VESSEL IDENTIFICATION

The attributes to be provided for the VESSEL needs to be consistent with several VESSEL registers at the global and regional level. The most important are the proposed IMO/UVI standard vessel identifier (UVI), the WCPFC vessel register and the FFA Vessel register.

FIELD	Data Collection Instructions	Field format notes	Validation rules	XML TAG	WCPFC FIELD
VESSEL NAME	PROVIDE the VESSEL attributes which should be consistent with the attributes stored in the WCPFC and FFA Regional Vessel Registers	CHAR(30) UPPER CASE	Must be consistent with the WCPFC and FFA Vessel Registers	<VESSELNAME>	Y
COUNTRY OF VESSEL REGISTRATION		CHAR(2) ISO 3166-1 alpha-2 two-letter country code UPPER CASE	ISO 3166-1 alpha-2 two-letter country code Must be consistent with the WCPFC and FFA Vessel Registers Country of registration is distinct from the chartering nation, where relevant	<COUNTRYREG>	Y
VESSEL REGISTRATION NUMBER		CHAR(20) UPPER CASE	Must be consistent with the WCPFC and FFA Vessel Registers	<REGNO>	Y
FFA VESSEL REGISTER NUMBER		INTEGER(5)	Must be consistent with the FFA Vessel Register	<FFAVID>	N
WCPFC RFV VID		INTEGER(10)	Must be consistent with the WCPFC RFV	<WIN>	Y
UNIVERSAL VESSEL IDENTIFIER (UVI)		INTEGER(10)	Must be consistent with the WCPFC and FFA Vessel Registers	<IMO_UVI>	N
VESSEL INTERNATIONAL CALLSIGN		CHAR(10) UPPER CASE	Must be consistent with the WCPFC and FFA Vessel Registers	<IRCS>	Y

APPENDIX A5 – PURSE SEINE OBSERVER ACTIVITY CODES

S_ACTIV_ID	Description	PURSE SEINE LOGSHEET	LOGLINE LOGSHEET	PURSE SEINE OBSERVER
1	Set	Y	Y	Y
2	Searching	Y	N	Y
3	Transit	Y	Y	Y
4	No fishing - Breakdown	Y	Y	Y
5	No fishing - Bad weather	Y	Y	Y
6	In port - please specify	Y	Y	Y
7	Net cleaning set	Y	N	Y
8	Investigate free school	Y	N	Y
9	Investigate floating object	Y	N	Y
10	Deploy - raft, FAD or payao	Y	N	Y
11	Retrieve - raft, FAD or payao	Y	N	Y
12	No fishing - Drifting at day's end	N	N	Y
13	No fishing - Drifting with floating object	N	N	Y
14	No fishing - Other reason (specify)	N	N	Y
15	Drifting -With fish aggregating lights	N	N	Y
16	Retrieve radio buoy	N	N	Y
17	Deploy radio buoy	N	N	Y
18	Transhipping or bunkering	N	Y	Y
19	Servicing FAD or floating object	Y	N	Y
20	<i>Helicopter takes off to search</i>	<i>N</i>	<i>N</i>	<i>Y</i>
21	<i>Helicopter returned from search</i>	<i>N</i>	<i>N</i>	<i>Y</i>

APPENDIX A6 – PURSE SEINE TUNA SCHOOL ASSOCIATION CODES

S_ACTIV_ID	Description	SCHOOL TYPE CATEGORY
1	Unassociated (free school)	UNASSOCIATED
2	Feeding on Baitfish (free school)	UNASSOCIATED
3	Drifting log, debris or dead animal	ASSOCIATED
4	Drifting raft, FAD or payao	ASSOCIATED
5	Anchored raft, FAD or payao	ASSOCIATED
6	Live whale	ASSOCIATED
7	Live whale shark	ASSOCIATED
8	Other (please specify)	
9	No tuna associated	

APPENDIX A7 – SPECIES CODES

Refer to the FAO three-letter species codes:

<http://www.fao.org/fishery/collection/asfis/en>

APPENDIX A8 – PURSE SEINE REASON FOR DISCARD

REASON CODE	Description
1	FISH DAMAGED / UNFIT FOR CONSUMPTION
2	VESSEL FULLY LOADED
3	GEAR FAILURE
4	NON-TARGET SPECIES
5	OTHER REASON (SPECIFY)

DRAFT - not for release

Attachment 4. Electronic Formatting Specifications for observer data and logbook data

These specifications describe the electronic files that CCMs must provide if they choose to use electronic reporting technologies to meet the following WCPFC reporting requirements:

- i. Paragraph 3 and Annex 1 of *Scientific Data to be Provided to the Commission*;
- ii. *WCPFC ROP Minimum Standard Data Fields*, as amended by WCPFC11 decisions.

A) File type

The information must be provided in one of the following formats:

Microsoft Excel file ; Comma separated values (CSV) text file ; Text file (TAB delimited) ; text file (no delimiters) XML

B) File name

The name of the file must be: **XX DDD VID DEPDATE <Table Name>.EXT**

- **XX** – two letter ISO country code (CMM 2014-03 Att 7) of the CCM providing the file
- **DDD** – type of report (LOG – logbook e-data and OBS – Observers e-data)
- **VID** – five digit integer assigned number for a vessels record on the WCPFC Record of Fishing Vessels (RFV) (CMM 2014-03)
- **DEPDATE** – Departure date of the Vessel trip (format YYYYMMDD)
- **<Table_Name>** – Respective (subset data) table name within this data type (refer to the relevant list of tables in the E-Reporting LOGSHEET and OBSERVER data field standards)
- **EXT** – the standard file extension (according to one of the five available formats)
 - XML
 - TXT file – COMMA delimited (CSV)
 - TXT file – TAB delimited
 - TXT file – No delimiters
 - XLS

Example : FM_OBS_35641_20140214_PS_CATCH.CSV

Represents a comma-delimited file provided by Federated States of Micronesia for an observer trip on-board the vessel identified with WCPFC RFV id as ‘35641’ with a departure date of 14/03/2014; This file is the subset data for this trip corresponding to the PS_CATCH Table in the ER Observer data standards document

C) File content and structure

Each record in the electronic file represents a single report. Each record must have the structure specified in Attachment 3A or 3B, including the same sequence of fields.

Sample electronic reporting files with the proper formats are available from the Secretariat.